

CEN
RACING

REEFER

MONSTER TRUCK 4WD



Instruction Manual

POWERED BY

HOBBYWING

SAVÖX

RTR
READY TO RUN!

4WD
FOUR WHEEL DRIVE

2.4
GHZ

PRECAUTIONS FOR SAFE ENJOYMENT OF YOUR R/C CAR

PRECAUTIONS FOR SAFE ENJOYMENT OF YOUR R/C CAR

For children under the age of 13, parental guidance is recommended when running.

ASSEMBLY PRECAUTIONS

- Do not assemble around small children. The parts can be dangerous if accidentally swallowed.
- Check the contents carefully before assembly. Please contact Customer Support if you happen to notice any defective or missing items.
- You will find the assembly process much easier by carefully reading through the manual, and familiarizing yourself with the instructions.
- Many different tools are required during assembly. For safety purposes, please use suitable tools. Exercise extra caution when using a sharp tool such as a hobby knife.
- Many different materials are used for the parts. Use extra care when handling parts with sharp edges, such as machined metal parts.
- When cutting plastic parts, watch for any flying parts.
- Try to assemble any rotating parts or drivetrain parts as smooth as possible.
- Bundle wires neatly away from the ground or any moving drivetrain components. Make sure that all wires are properly connected to prevent shorting.
- Unnecessary modifications may be unsafe and hinder performance.

PRECAUTIONS BEFORE RUNNING

- R/C cars some models may exceed speeds of 40km per hour. Practice common sense and run the car in open safe places, or R/C car tracks.
- Do not run the car on public roads with high amounts of traffic, or in areas that may cause an inconvenience to people in that area.
- R/C cars are controlled using a radio frequency. In a worst-case scenario. Radio interferences may cause loss of control.
- If others near you are running R/C cars, confirm that they are not running on the same frequency.
- R/C cars do not like water. Avoid running on rainy days, or areas with water puddles. Exposure of the electronics to water may cause loss of control or damage to the electronics.
- The drivetrain of an R/C car consists of many moving parts like gears, shafts, and tires. Avoid touching these areas when the battery is connected.
- Many parts of an R/C car will become hot after running. Allow the parts to sufficiently cool before conducting any maintenance.

BEGINNING A RUN

1. Place the R/C car on a stand so the wheels are off the ground.
2. Confirm that the speed controller switch is OFF, and connect the motor and battery.
3. Extend the transmitter antenna and turn the switch ON. (It is unsafe to use a transmitter with low voltage. Make sure that the transmitter batteries are good before running)
4. Turn the speed controller switch ON.

FINISHING A RUN

1. Turn the speed controller switch OFF.
2. Disconnect the battery.
3. Turn the transmitter switch OFF, and retract the antenna.

BATTERY USAGE

(Carefully read the instruction included with the batteries.)

- When charging batteries, make sure that the surrounding area is void of anything highly flammable. Also avoid charging in high-temperature locations.
 - When charging batteries, frequently monitor the charging it catch on fire.
- If the battery reaches 50 degrees Celsius or more, stop charging.
- Batteries will become hot after running. Continuous use of the battery pack may result in damage to the cells. Allow the battery too cool down before re-charging. Using a battery conditioner after running may prolong the life and performance of the battery.
 - Please do not discard old battery packs in the trash. Although inconvenient, please locate a battery disposal center.

MOTOR USAGE

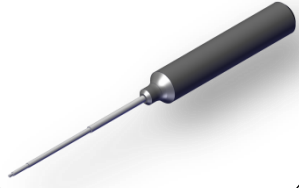
(Carefully read the instruction included with the motor.)

- Connecting a 7.2V battery directly to the motor can be very dangerous.
 - Choose a gear ratio that matches the power characteristics of the motor.
- Using a gear ratio unsuited to the characteristics of the motor will not only prevent the motor from performing at its optimum, but may even cause damage to the other electronics.
- Motors will generally become very hot after running. Continuous running will reduce the life of the motor. Allow the motor to sufficiently cool between each run.

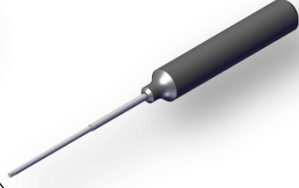
Tools Required(Not Included)

Wrench

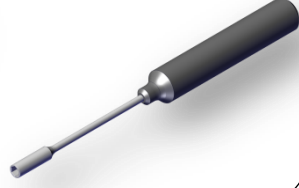
1.5mm Hex Wrench



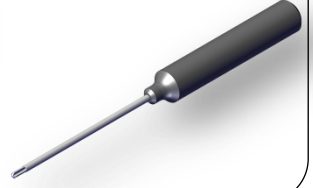
2.5mm Hex Wrench



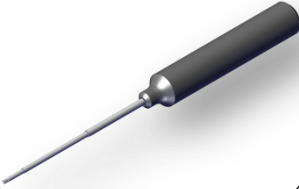
5.5mm Hexagon Socket



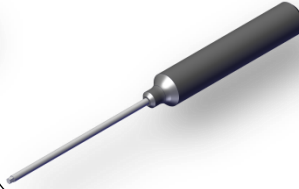
Phillips Screw Driver



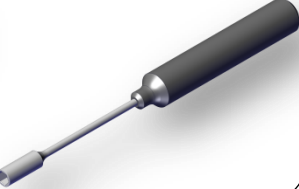
2.0mm Hex Wrench



3.0mm Hex Wrench

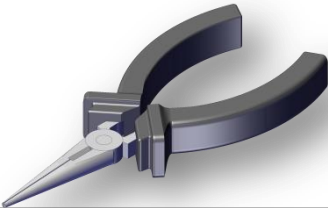


7.0mm Hexagon Socket

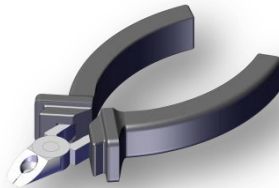


Plier

Needle-Nose Pliers



Cutter Pliers

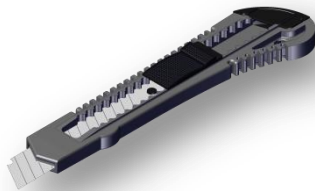


Miscellaneous

Scissors



Utility Knife



Thread Lock

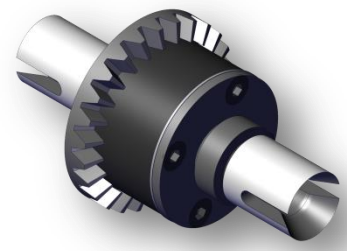
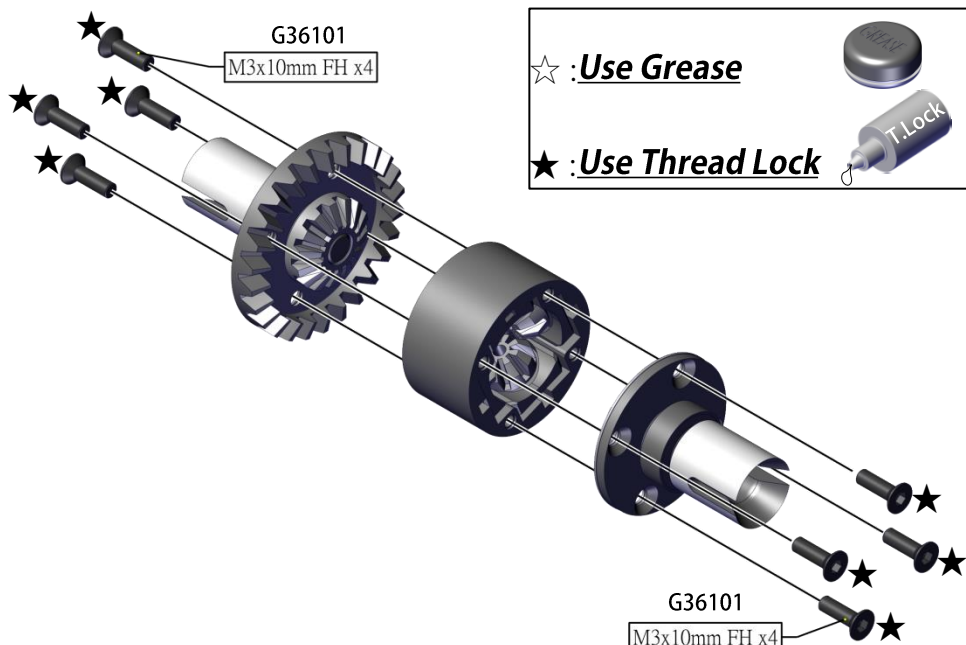
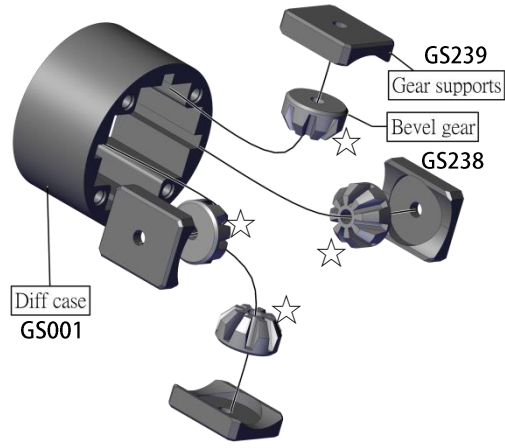
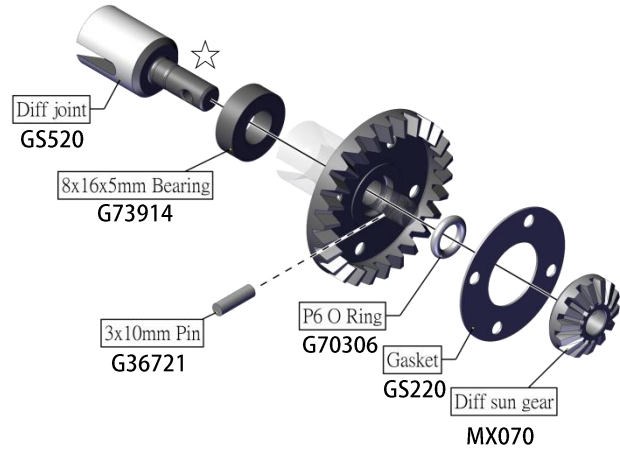
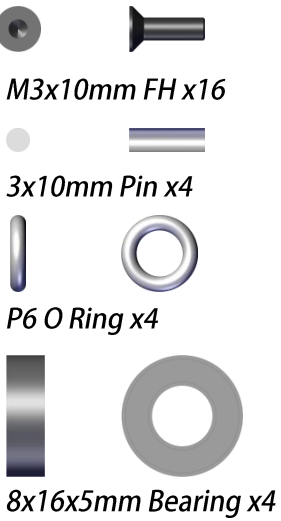


Grease






1:1

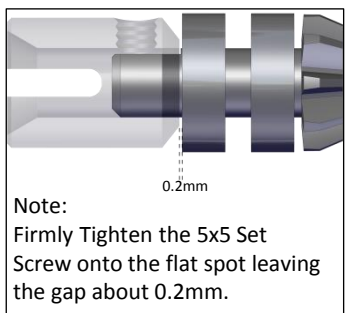
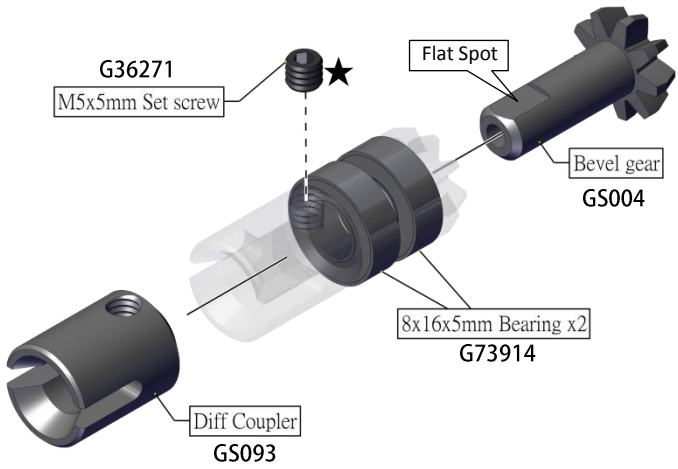
Front and Rear Differential Assembly



1:1

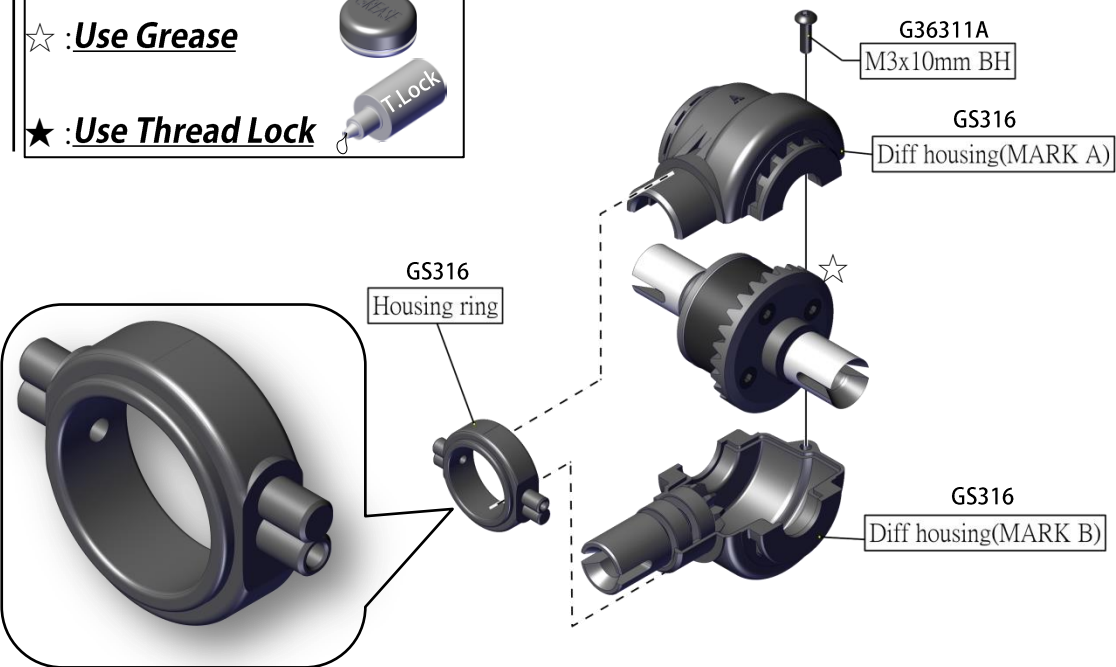
Front and Rear Gear Box

-  M3x10mm BH x2
-  M5x5mm Set screw x2
-  8x16x5mm Bearing x4

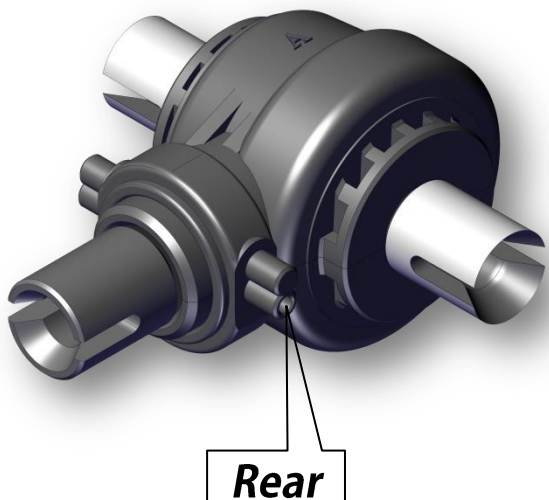
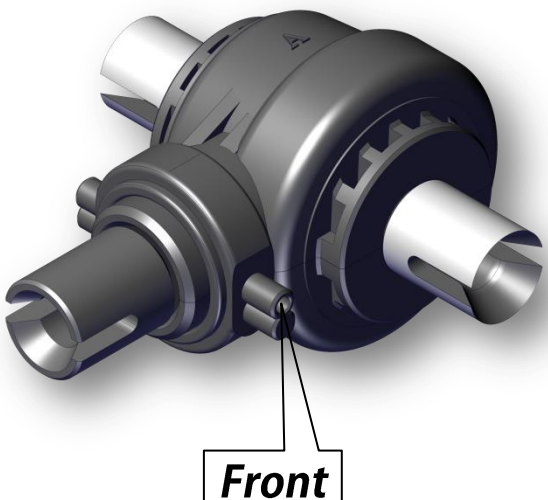


☆ : **Use Grease**

★ : **Use Thread Lock**

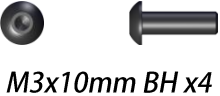


⚠ Pay Attention to the Proper Orientation

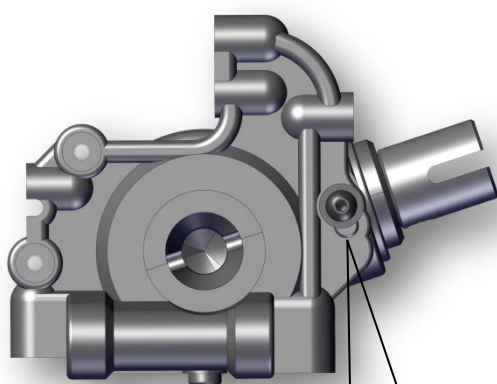
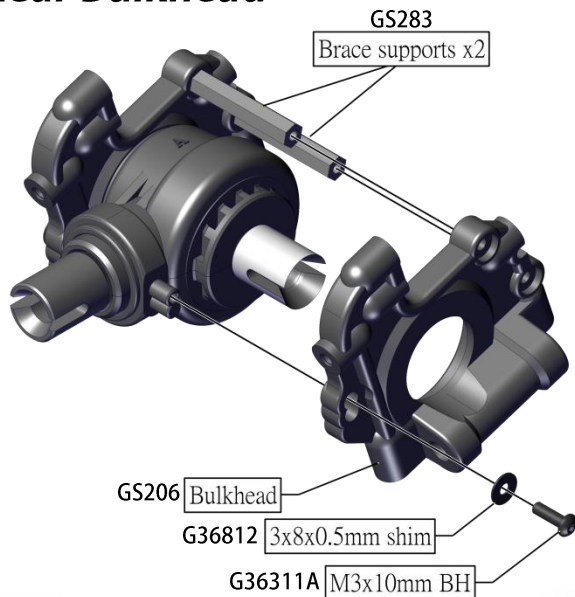


1:1

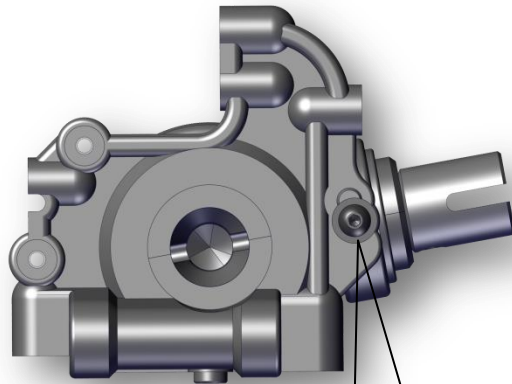
Front and Rear Bulkhead



Brace supports x4



Front End

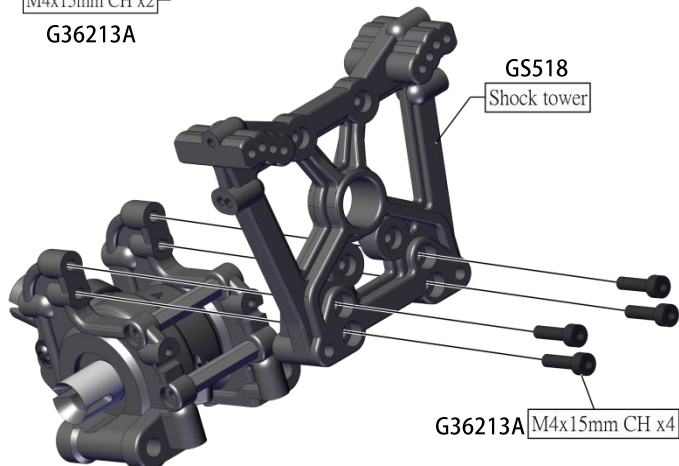
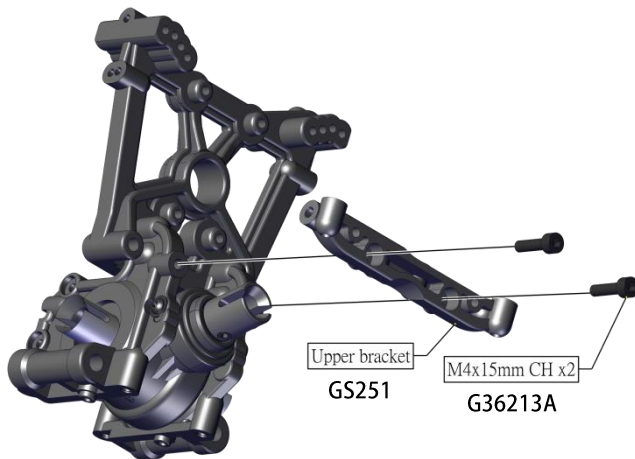


Rear End



M4x15mm CH x12

Front and Rear Shock Tower & Upper Bracket



1:1

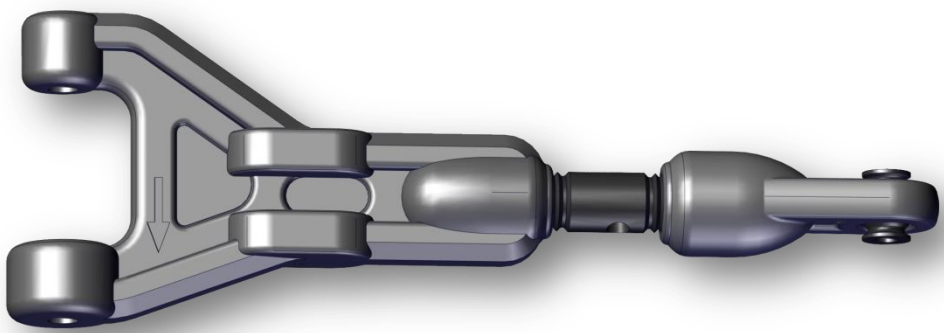
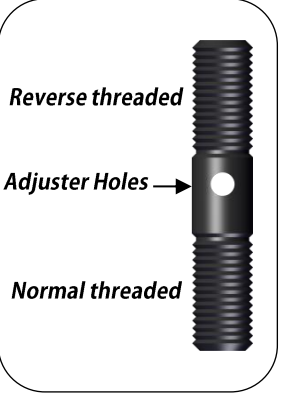
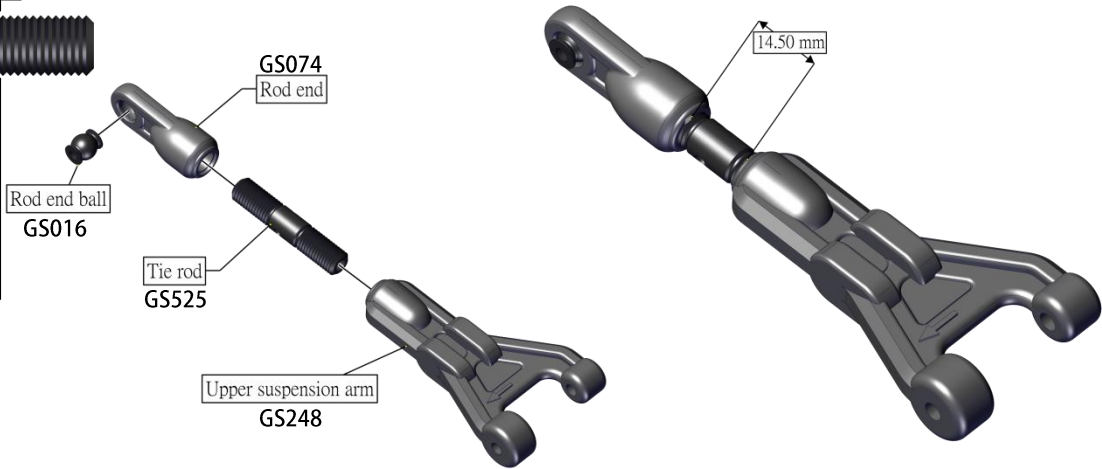
Front and Rear Upper Suspension Arm



M8x41mm Tie rod x4



B7.8mm Rod end ball x4



Upper Suspension Arm Assembly x4

1:1

Front and Rear Driveshafts



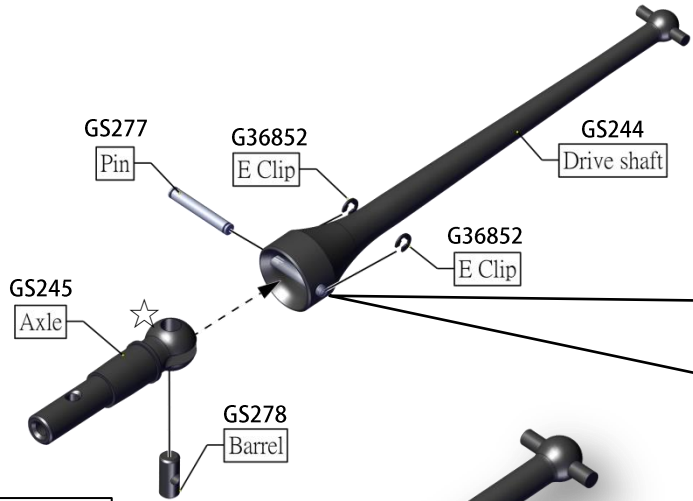
3x18mm Pin x4



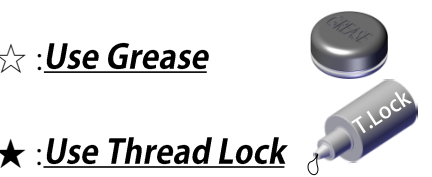
E2 Clip x8



Barrel x4

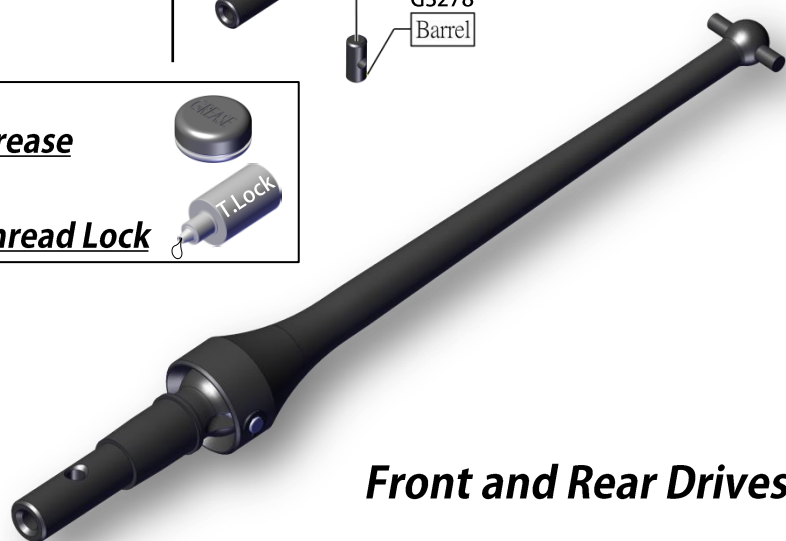


Insert the barrel into the axle
Align pin hole, Push pin thought
and secure with two "E" clips.



☆ : Use Grease

★ : Use Thread Lock



Front and Rear Driveshaft Assembly x4

1:1


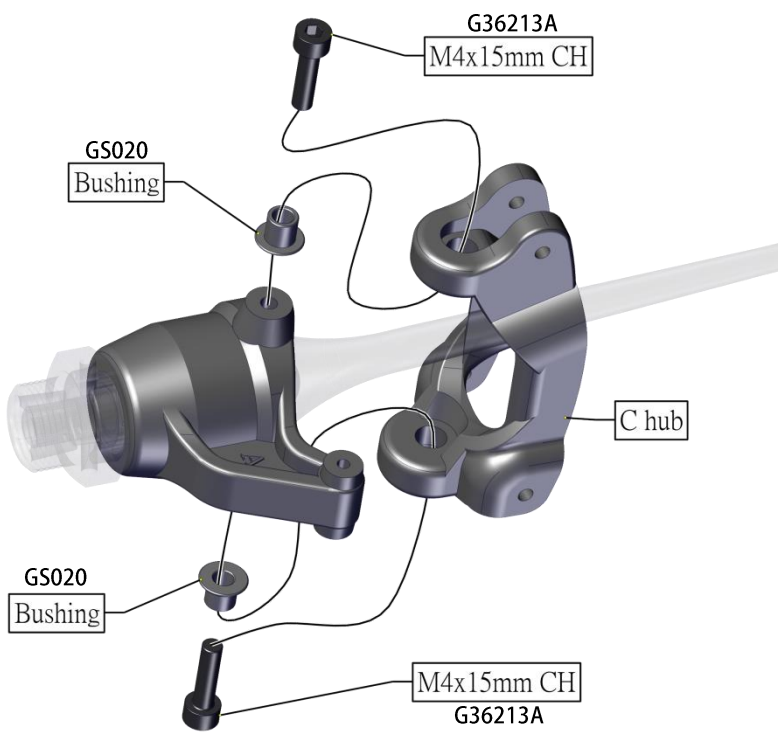
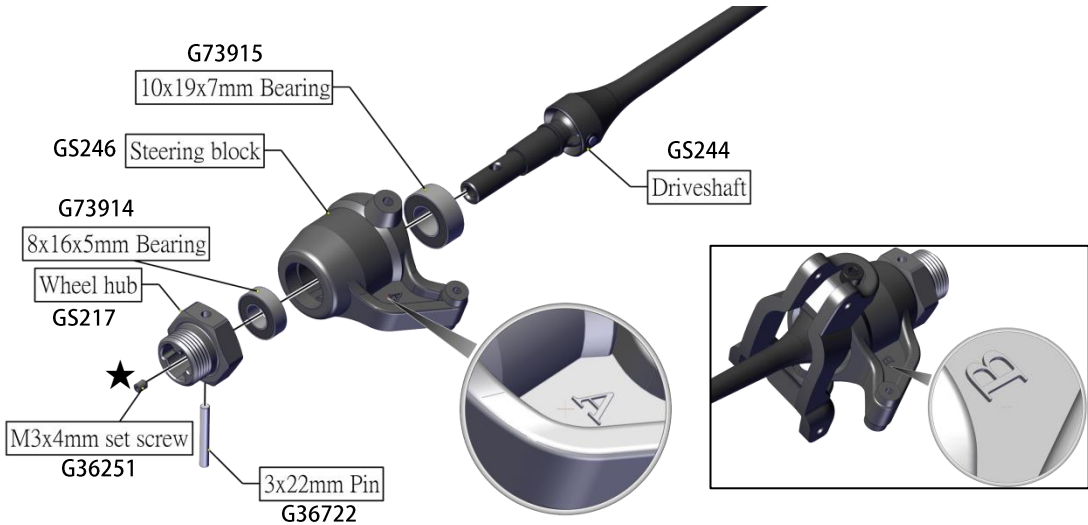
Front and Rear Spindle Assembly

- M3x4mm set screw x4
- 8x16x5mm Bearing x4
- 10x19x7mm Bearing x4

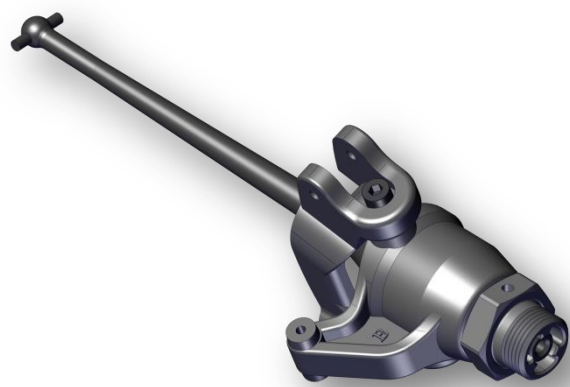
- 3x22mm Pin x4
- M4x15mm CH x8
- Bushing x8

☆ : Use Grease

★ : Use Thread Lock

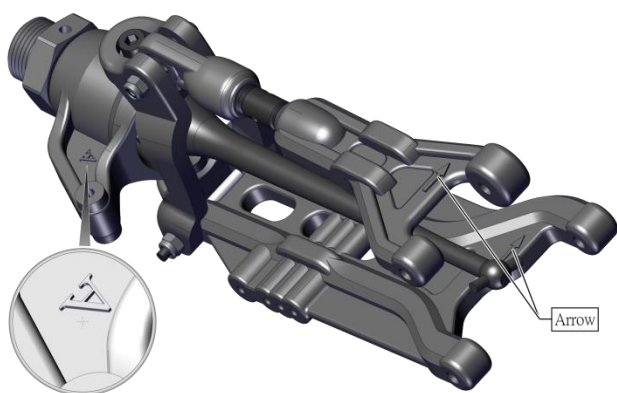
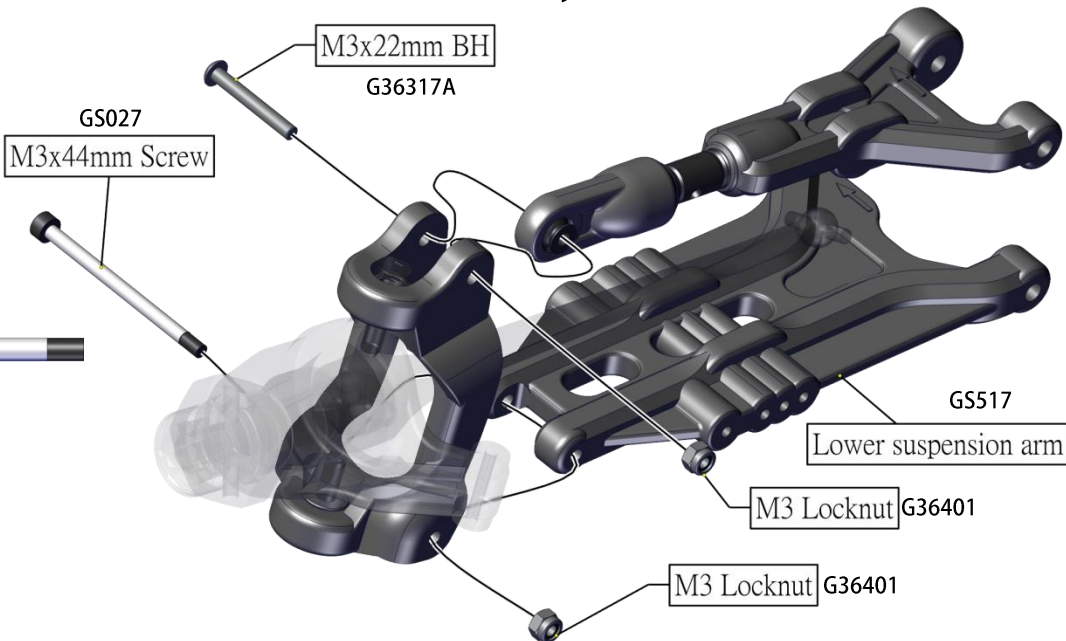
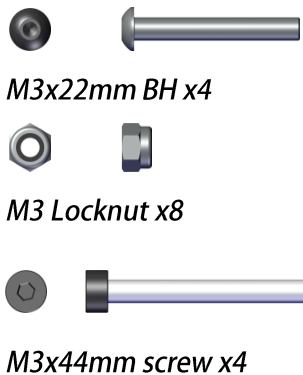
Left Assemble 2 Sets



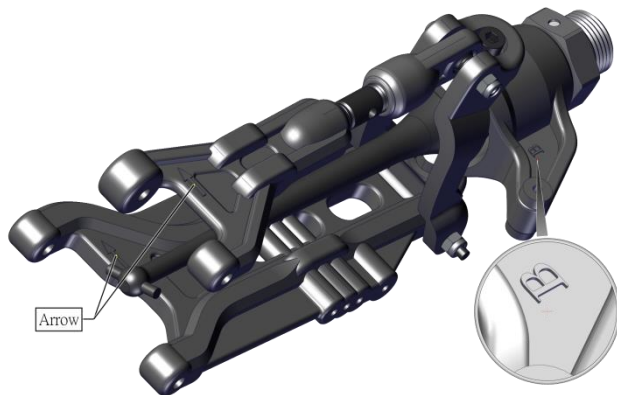
Right Assemble 2 Sets

1:1

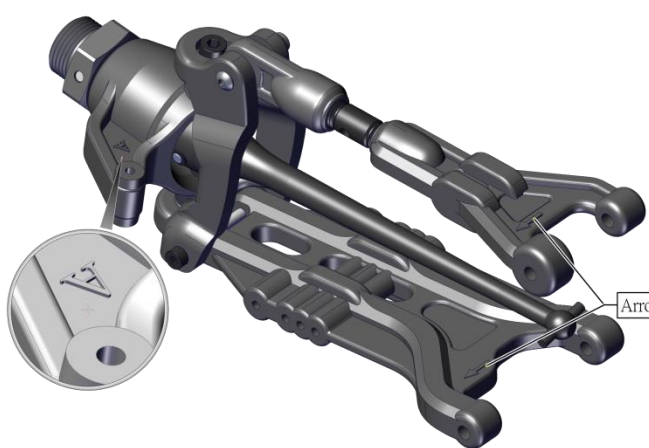
Front and Rear Arms Assembly



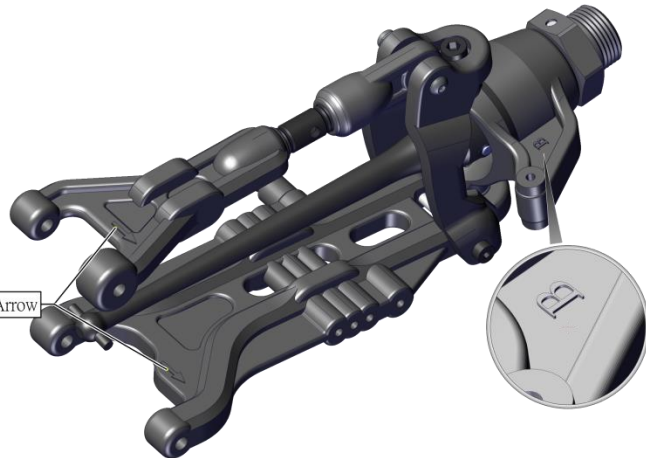
Front Left



Front Right



Rear Left



Rear Right

1:1

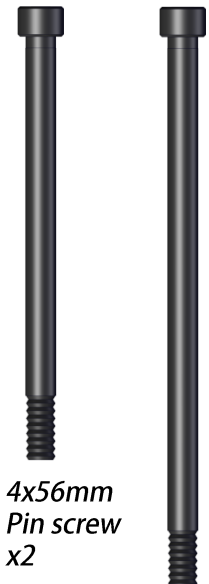
Front End Suspension Assembly



Bushing x4



M4 Locknut x2

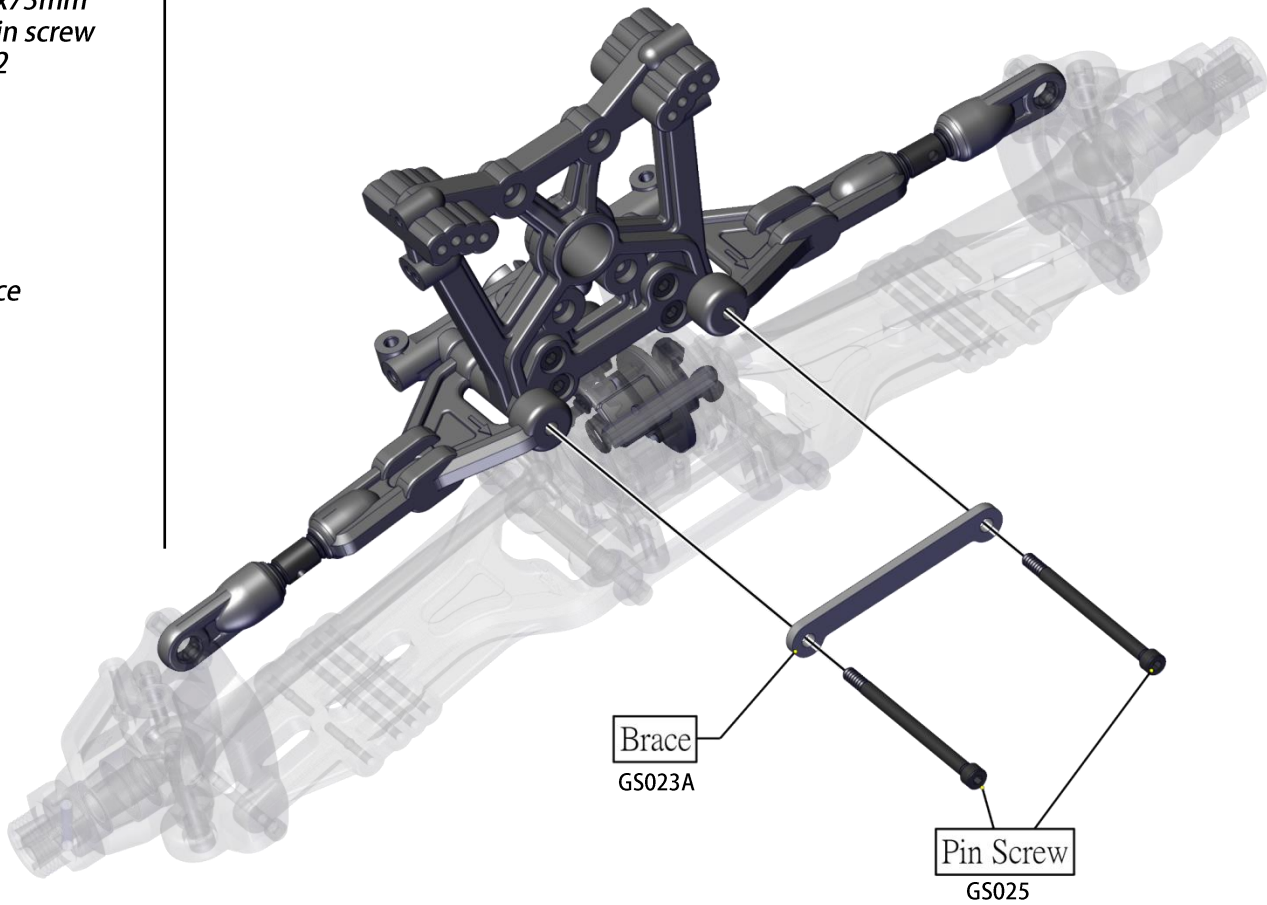
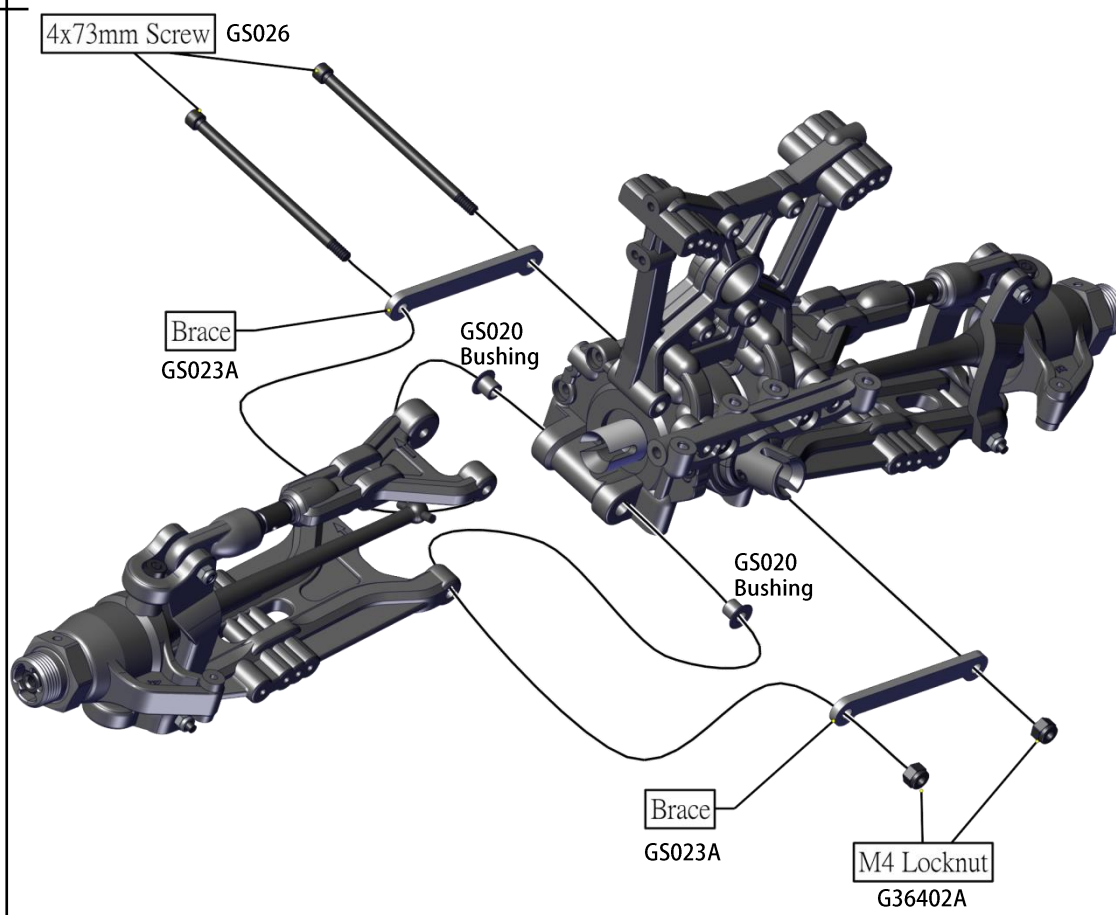


4x56mm Pin screw x2

4x73mm Pin screw x2

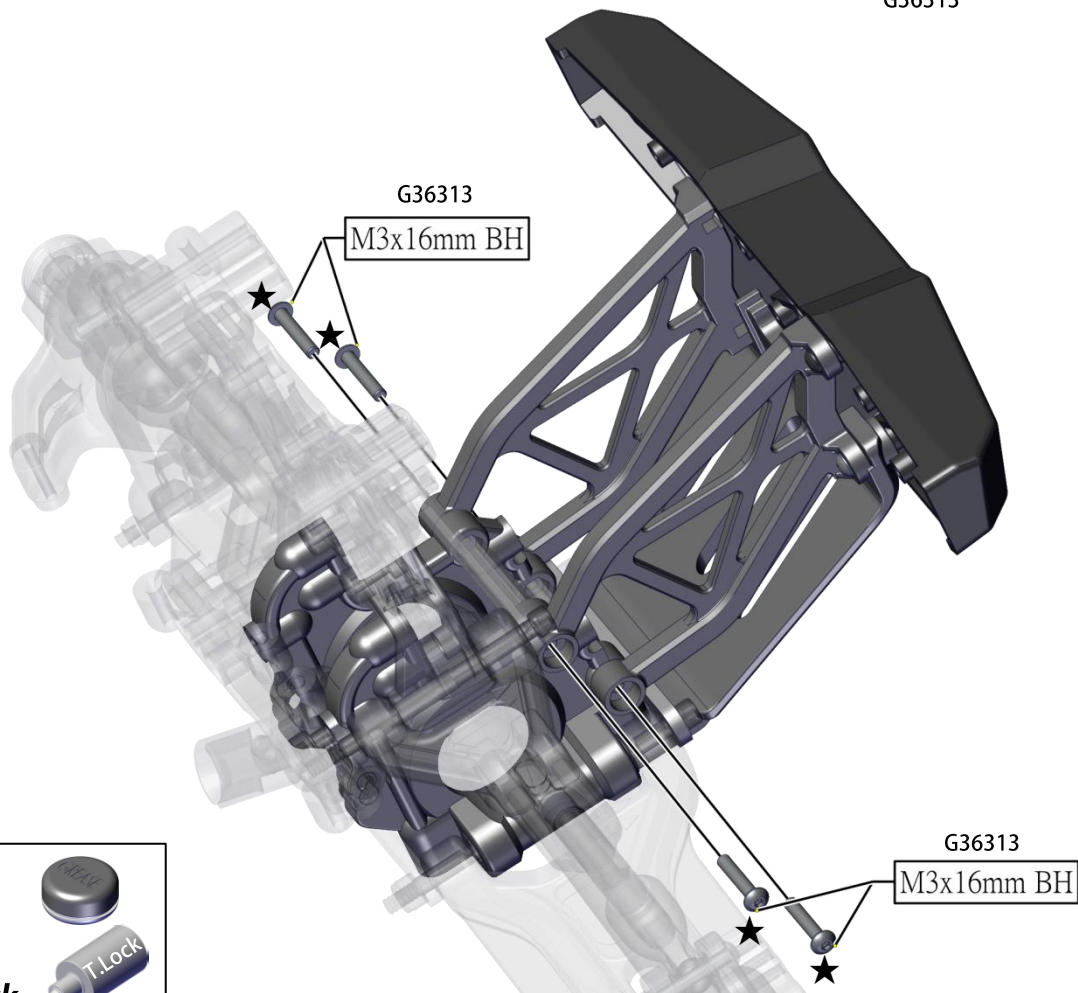
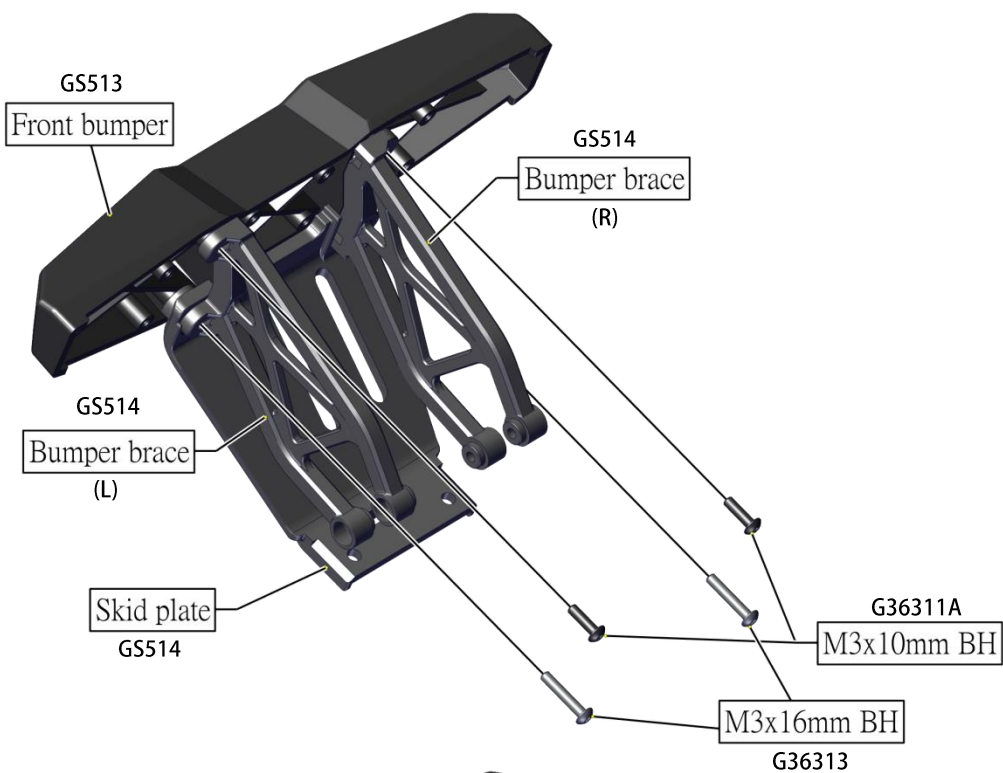
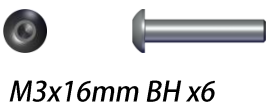


Brace x3



1:1

Front Bumper



☆ : **Use Grease**



★ : **Use Thread Lock**



1:1

Servo Saver/Steering Bellcrank



12x16x0.5mm shim x2



ST Washer x2



ST bolt bush x2



6x10x3mm Bearing x4



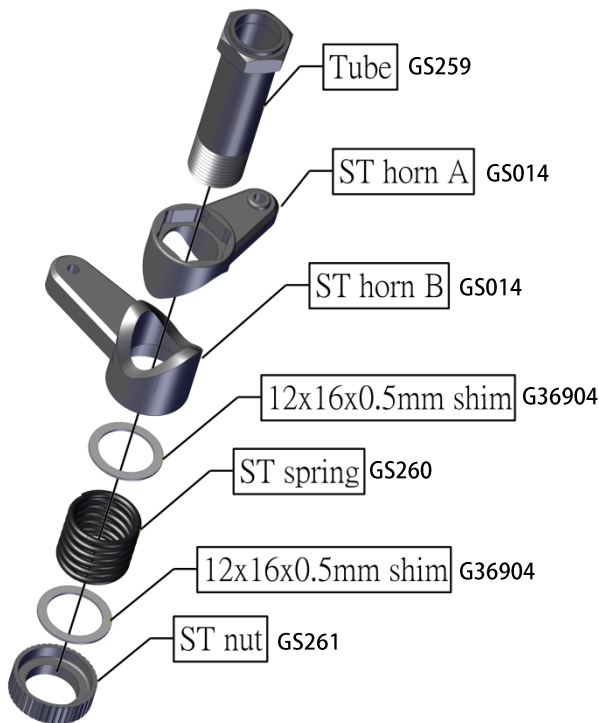
M3x16mm BH x2



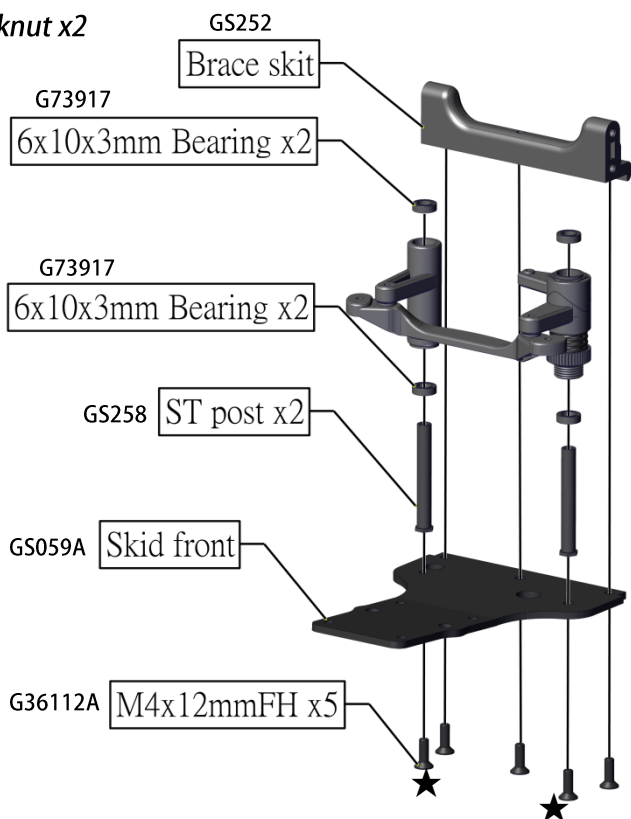
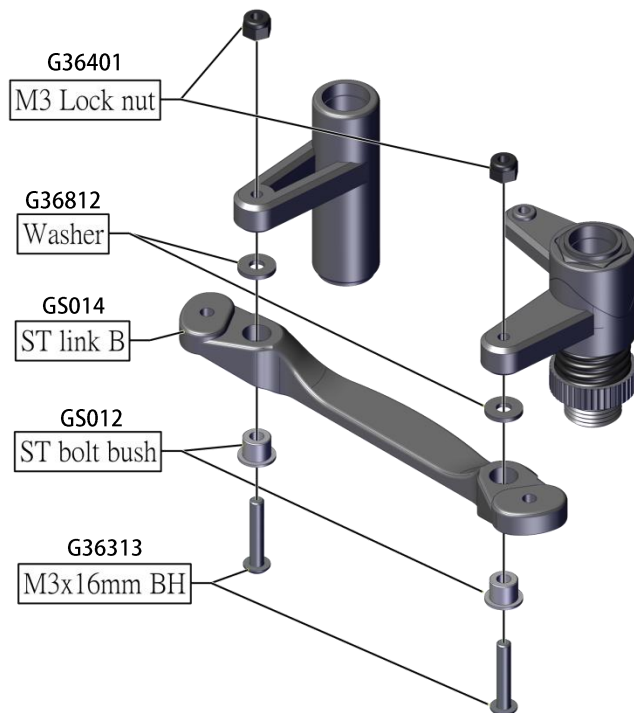
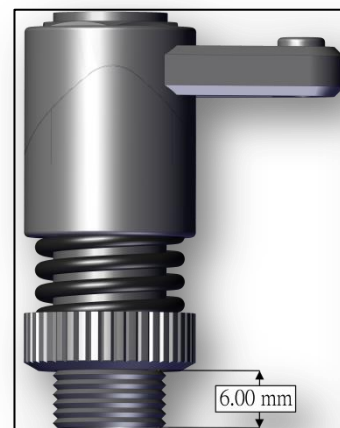
M4x12mm FH x5



M3 Locknut x2



1:1













☆ : **Use Grease**

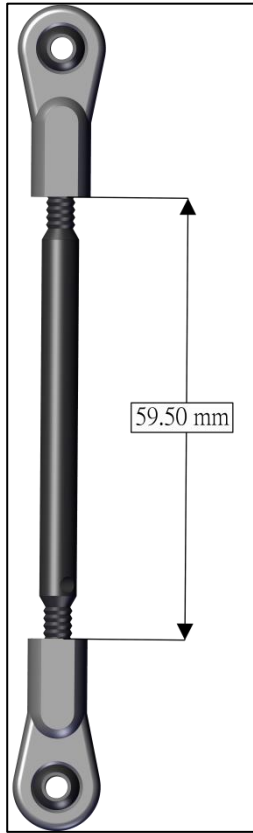
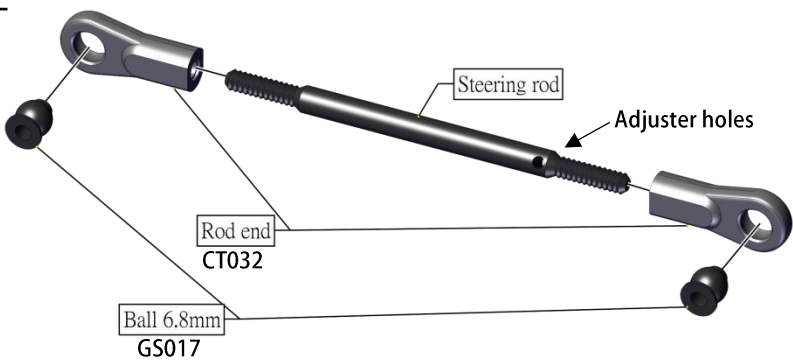
★ : **Use Thread Lock**

1:1

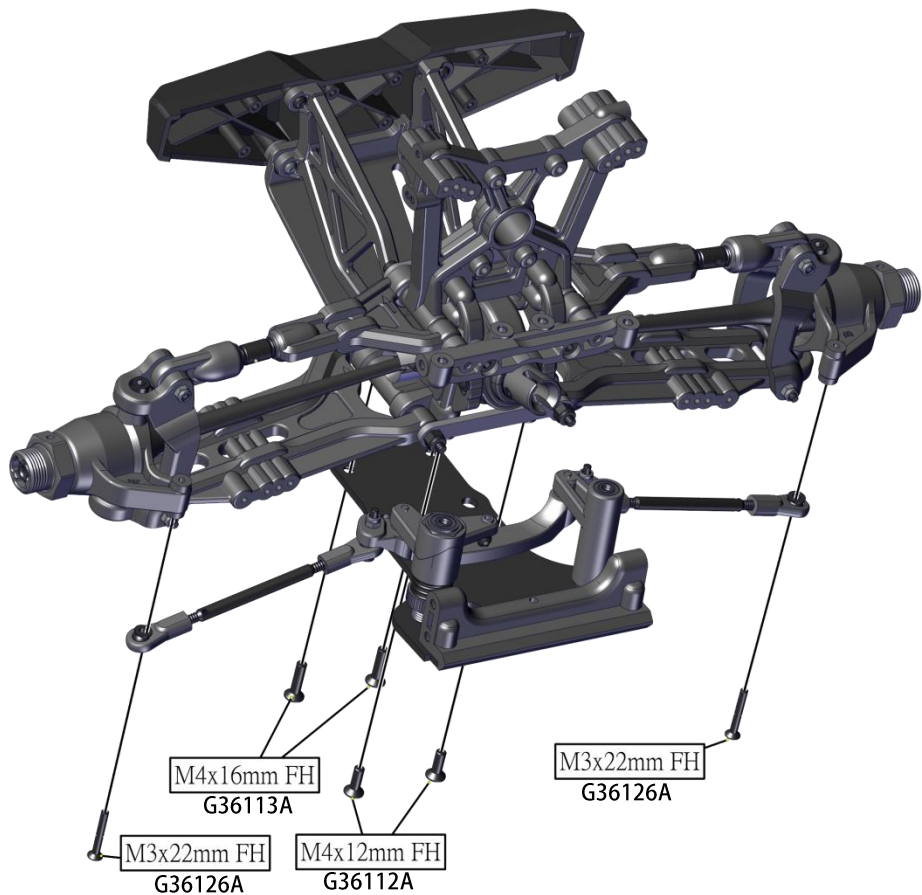
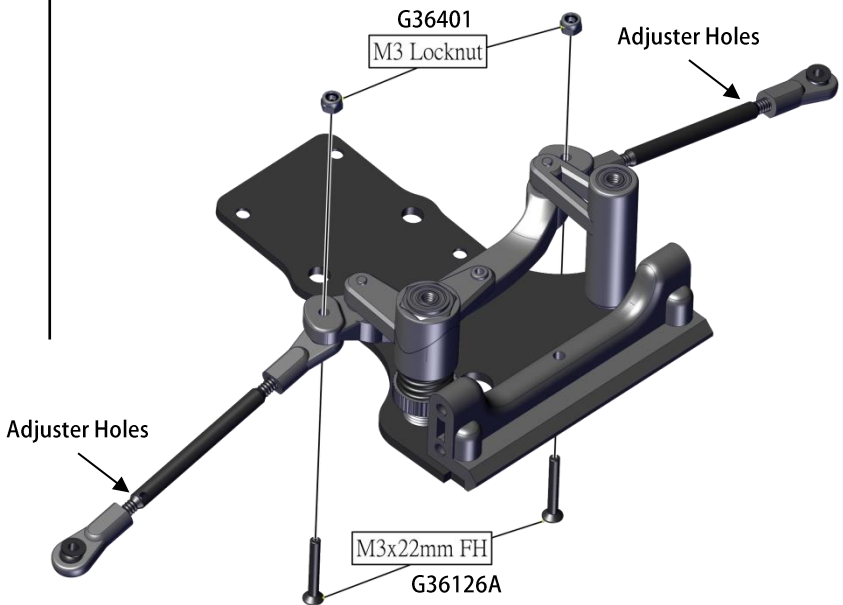
Front Skid Plate/Steering Rod

1:1

-   M3 Locknut x2
-   Ball 6.8mm x4
-   M3x22mm FH x4
-   M4x12mm FH x2
-   M4x16mm FH x2



Assembly x2



1:1

Rear End Suspension Assembly



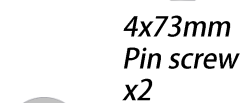
Bushing x4



M4 Locknut x2



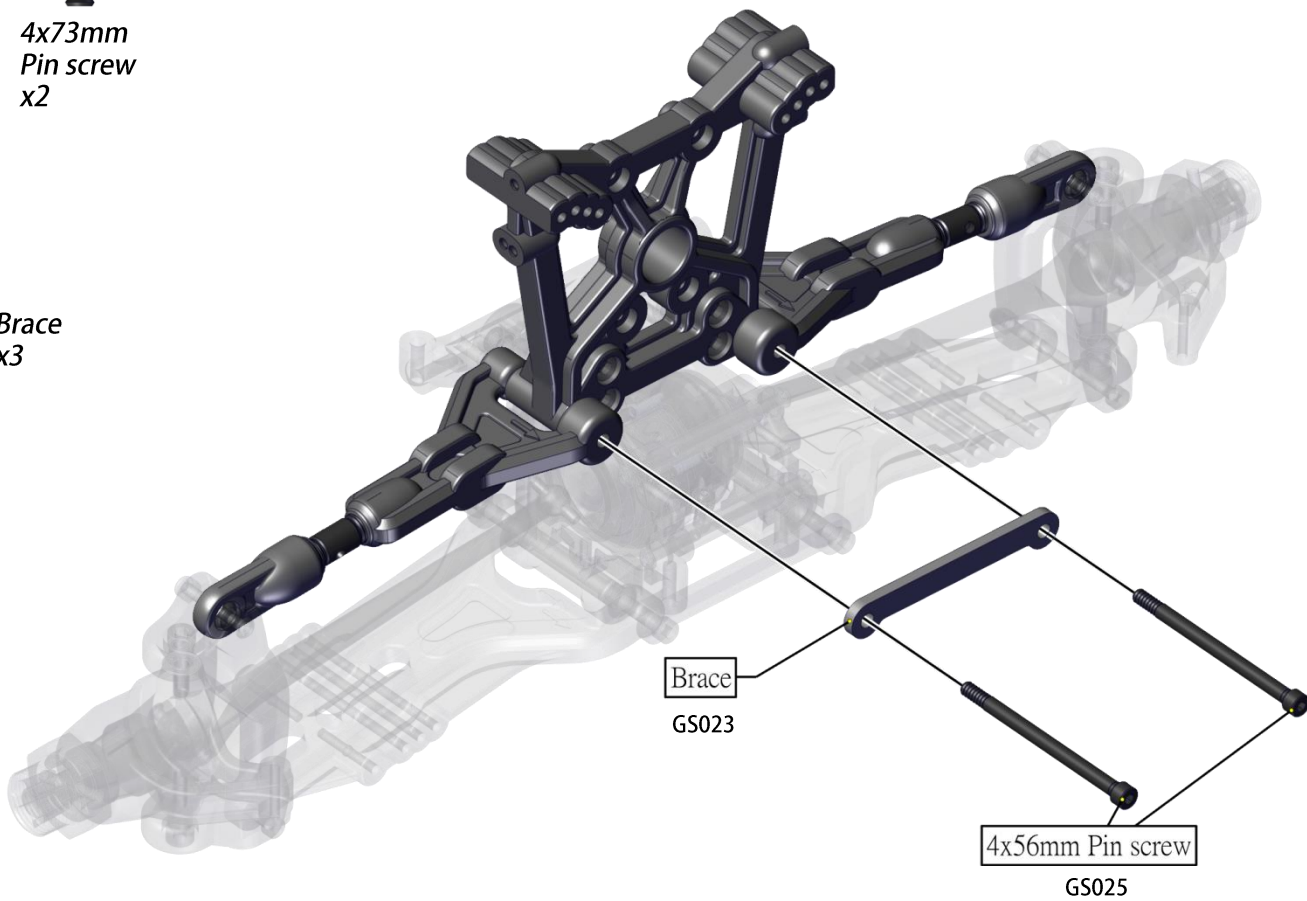
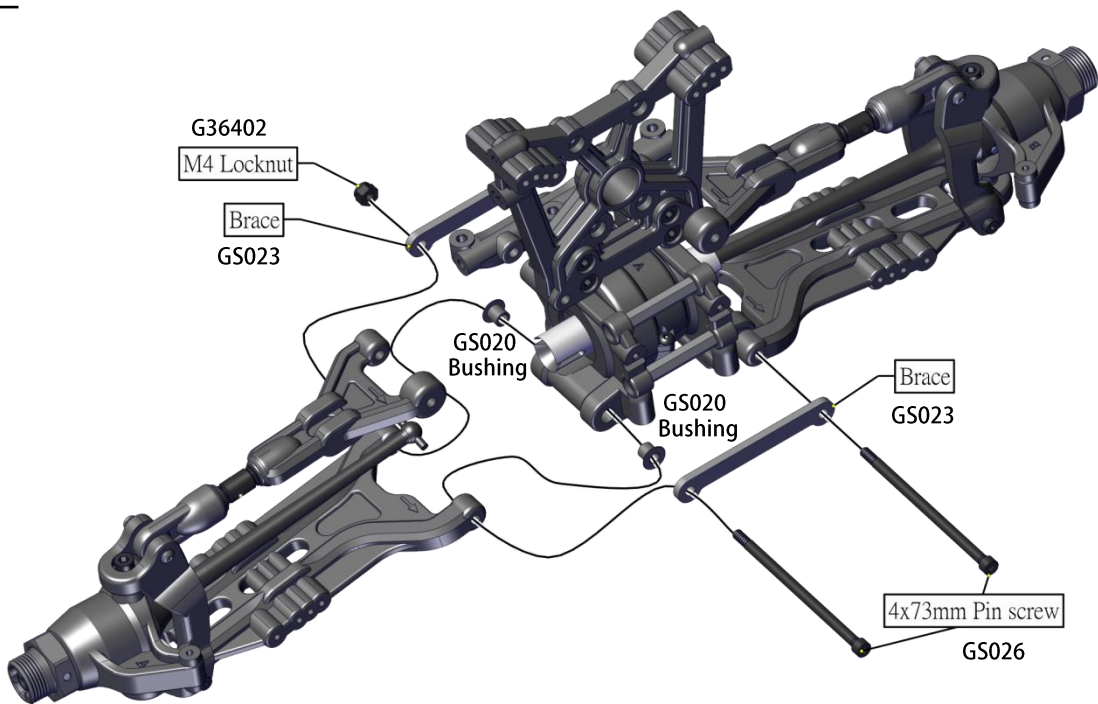
4x56mm Pin screw x2



4x73mm Pin screw x2



Brace x3



1:1

Rear Toe-In Bar



7.8mm Ball x4



Toe in brace x1



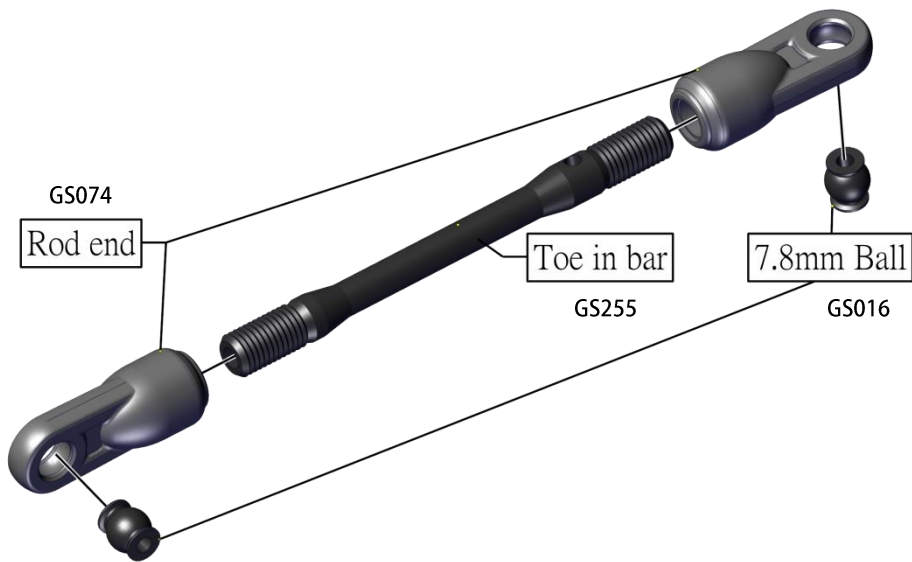
M3x20mm BH x2



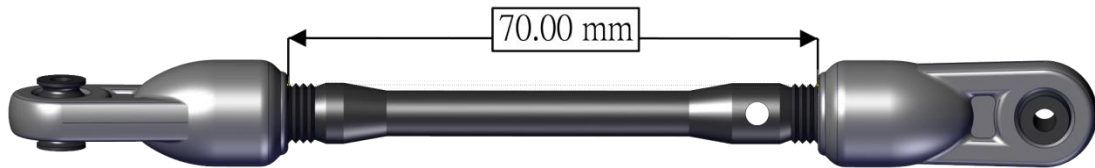
M3x22mm BH x2



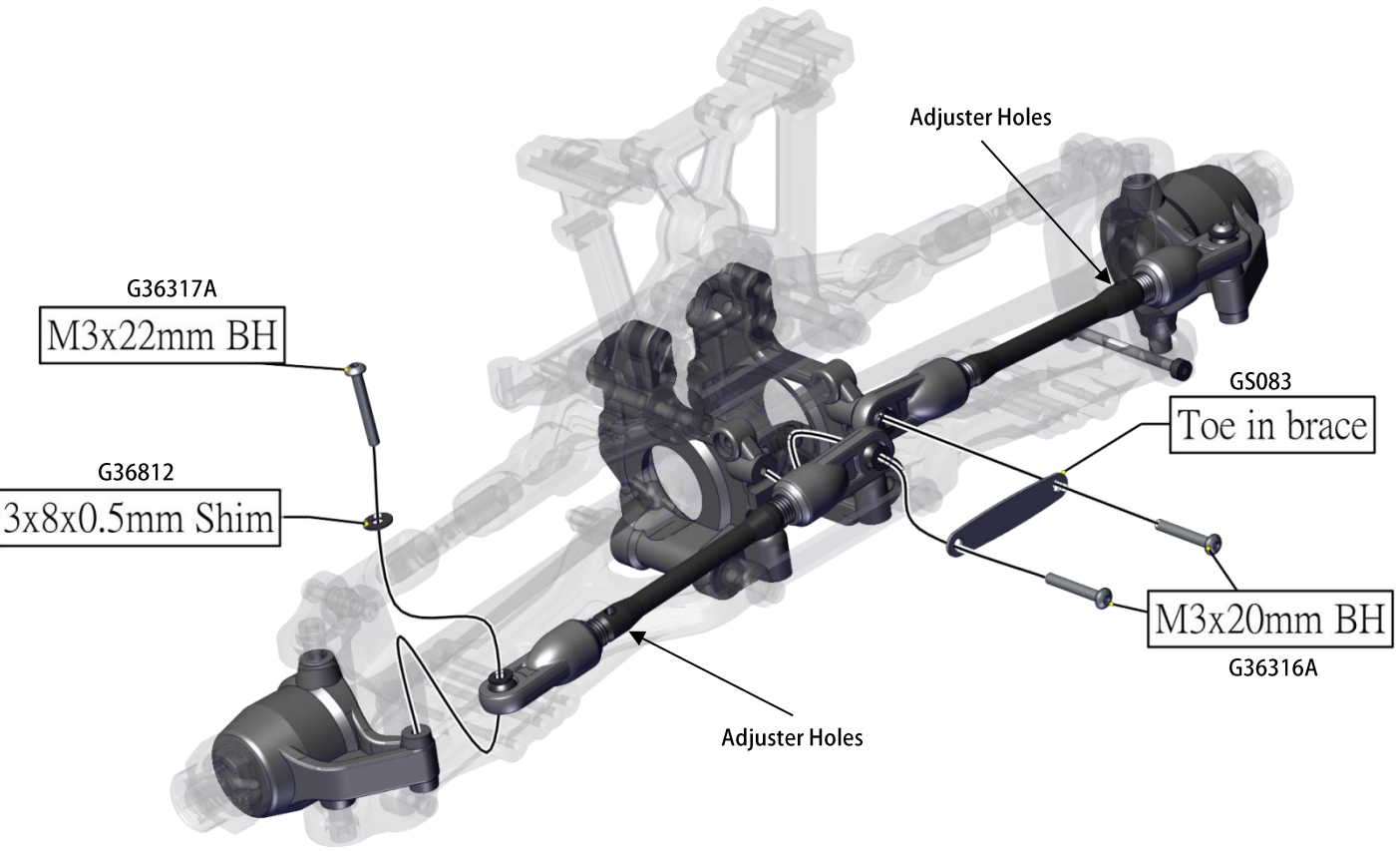
3x8x0.5mm Washers x2



1:1



Assemble 2 Sets



1:1

Rear Bumper/Skid Plate



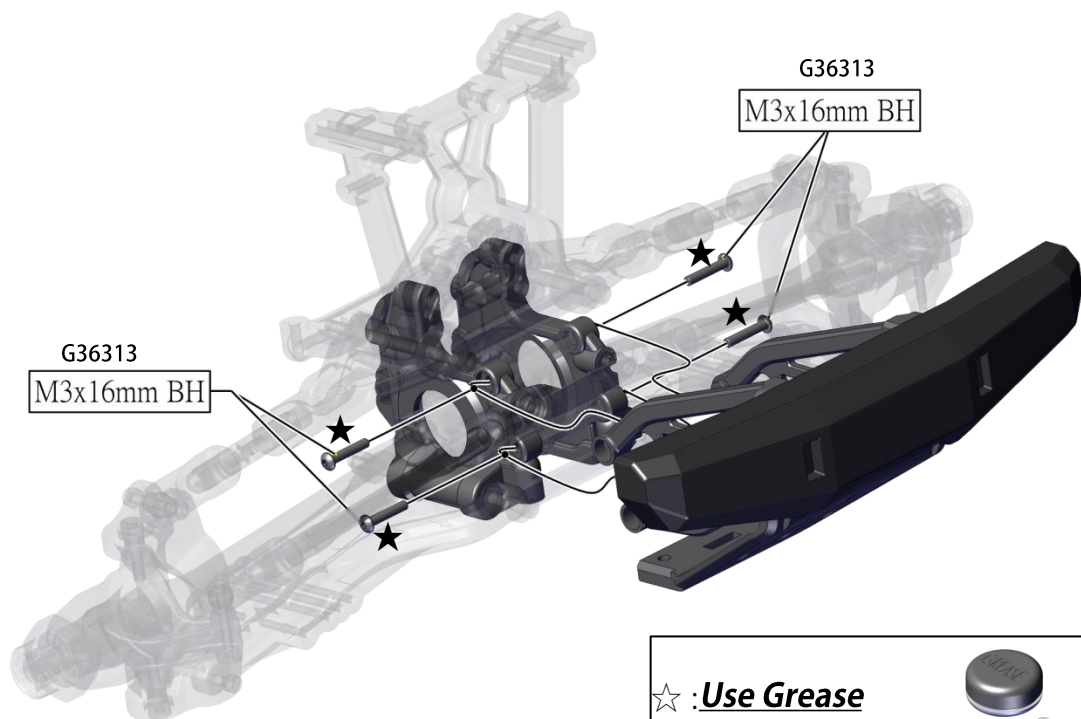
M3x16mm BH x4




M4x12mm FH x5

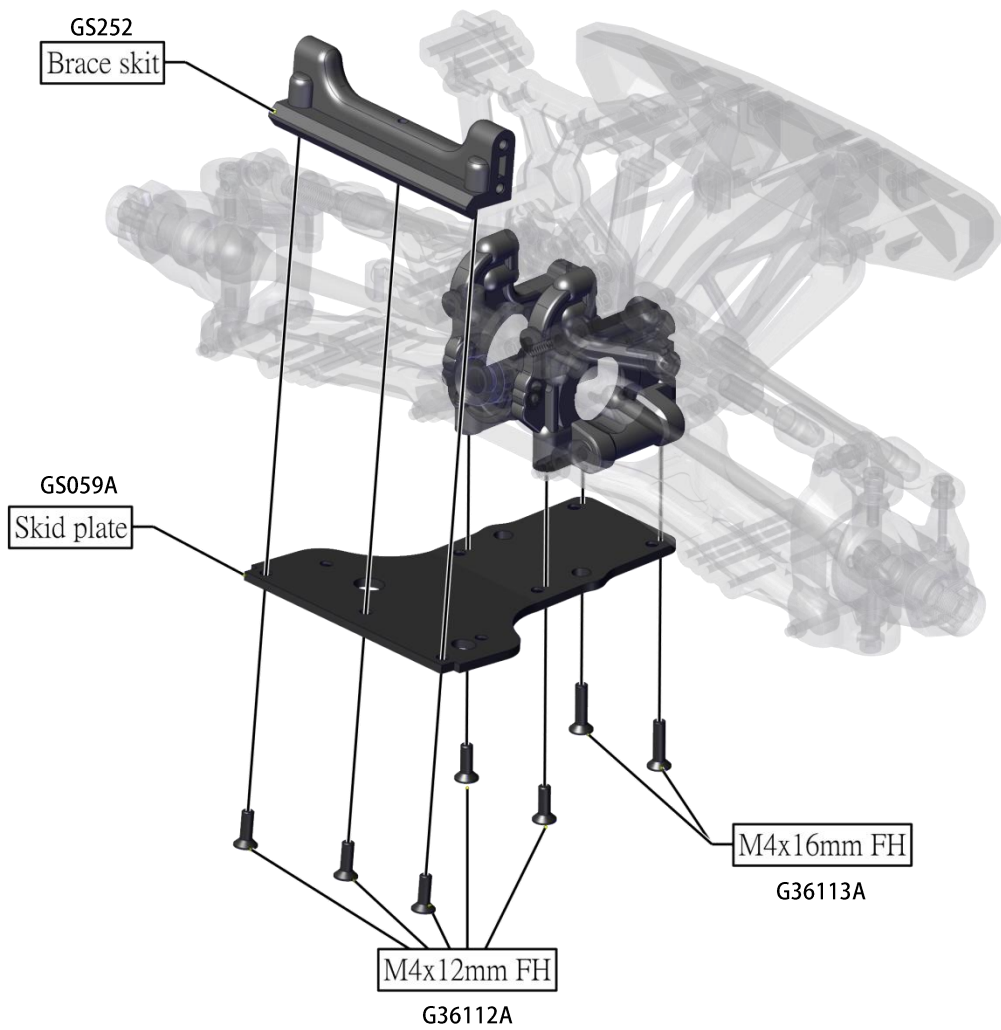


M4x16mm FH x2

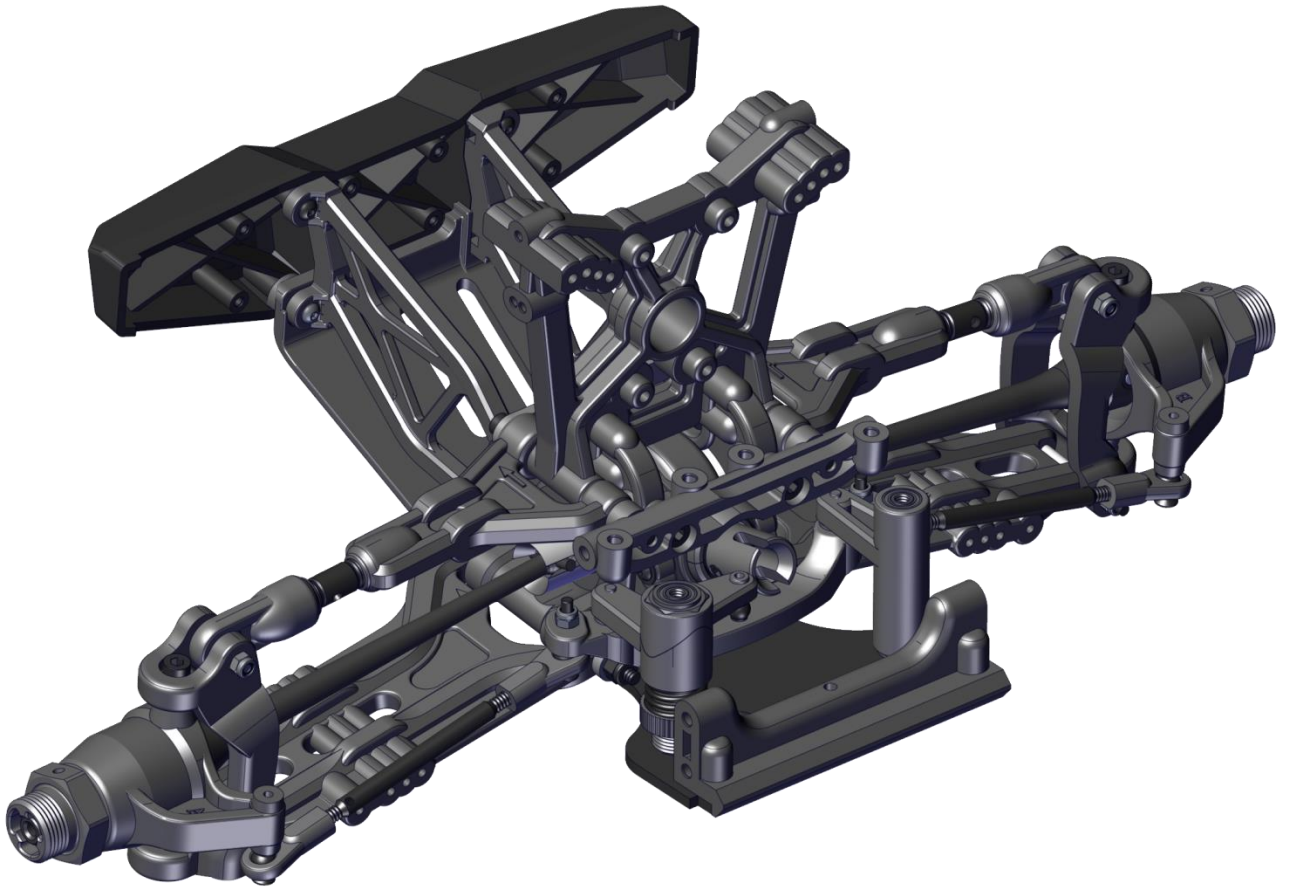


☆ : Use Grease 

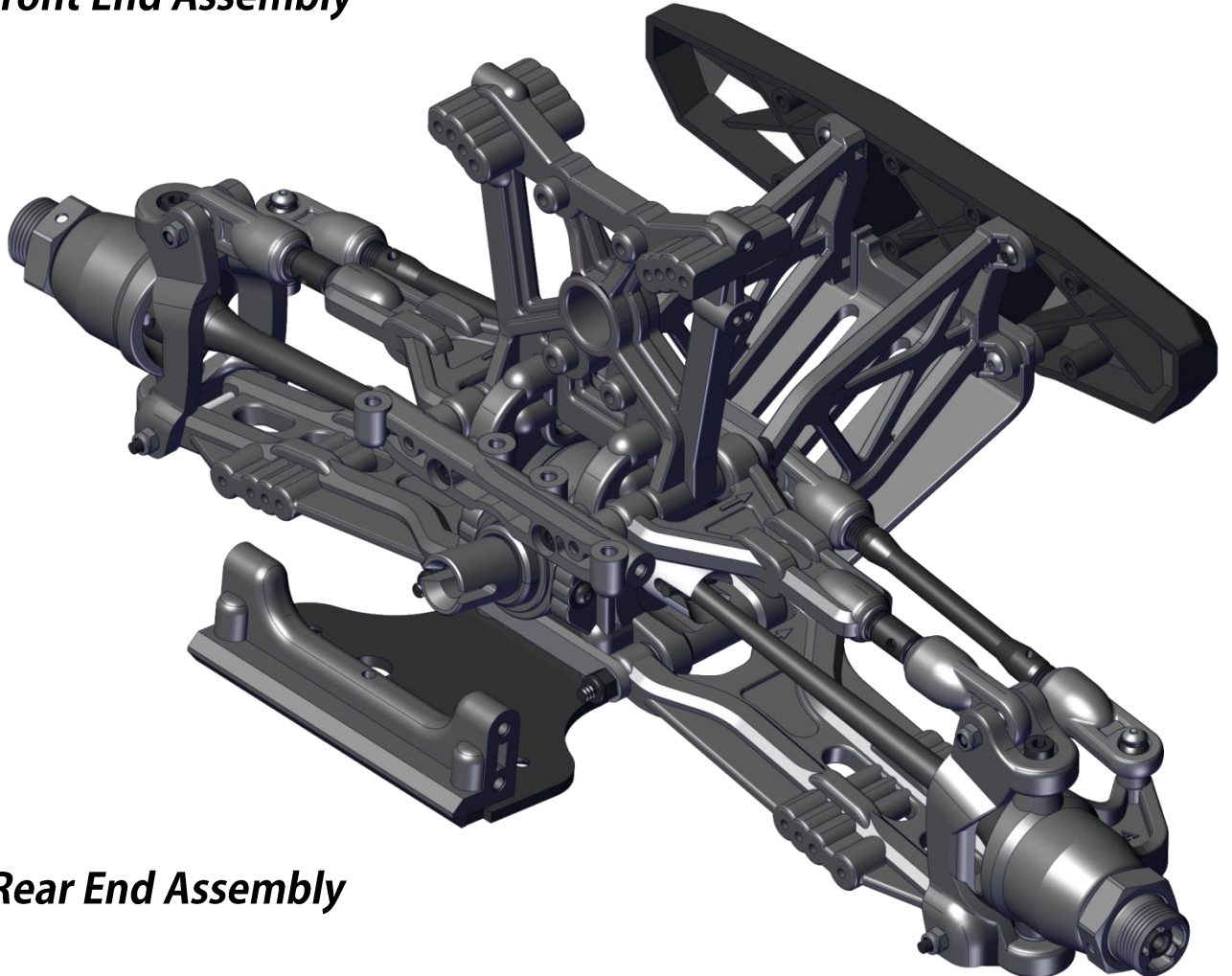
★ : Use Thread Lock 



Front and Rear Suspension Assemblies



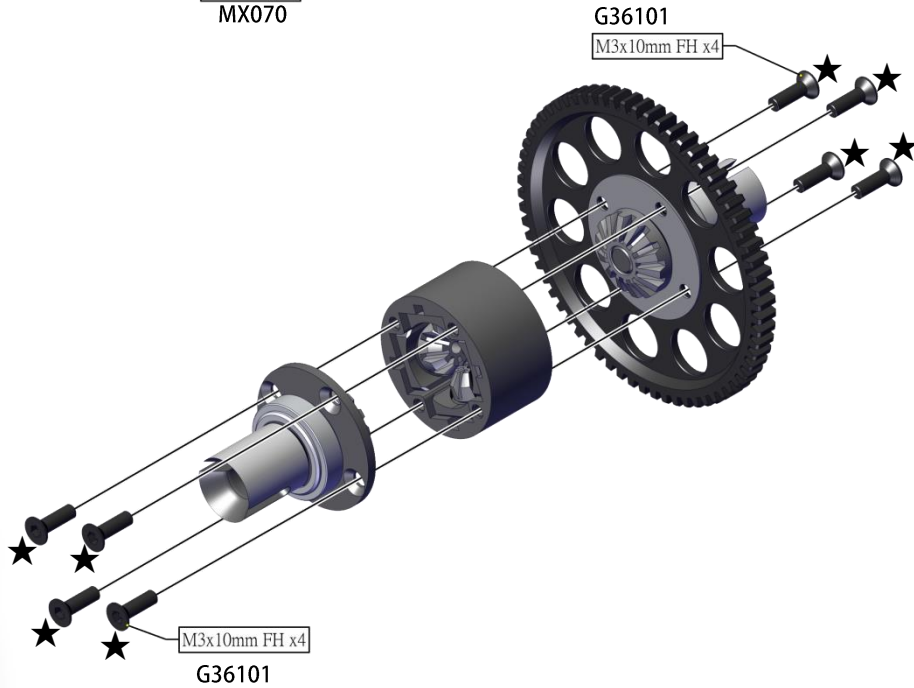
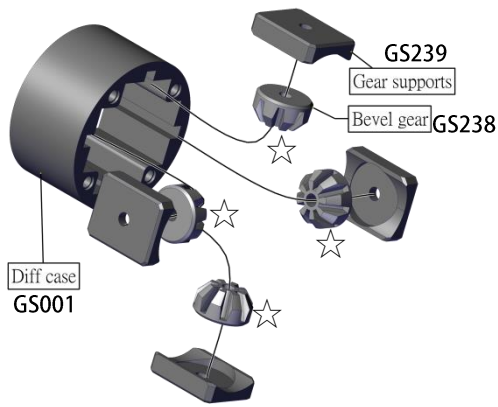
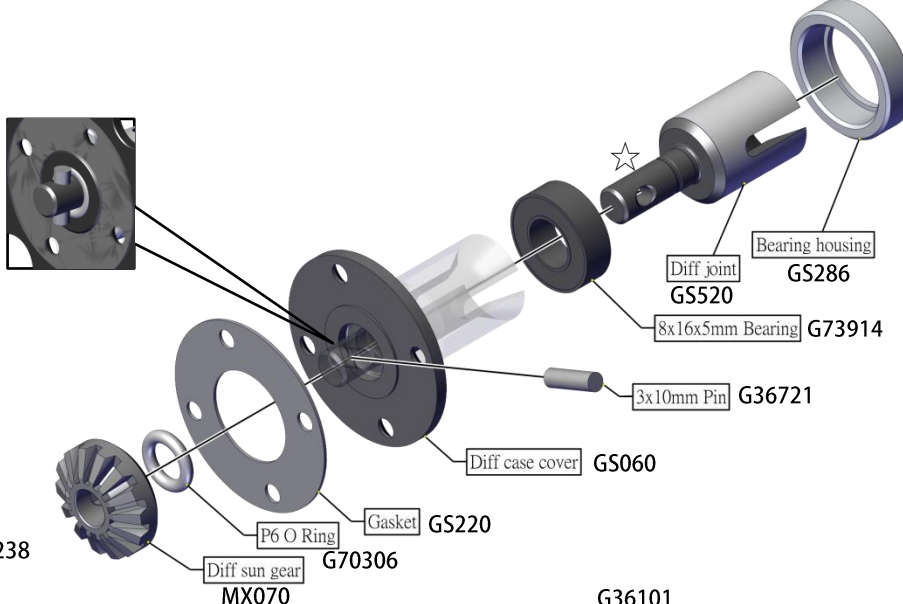
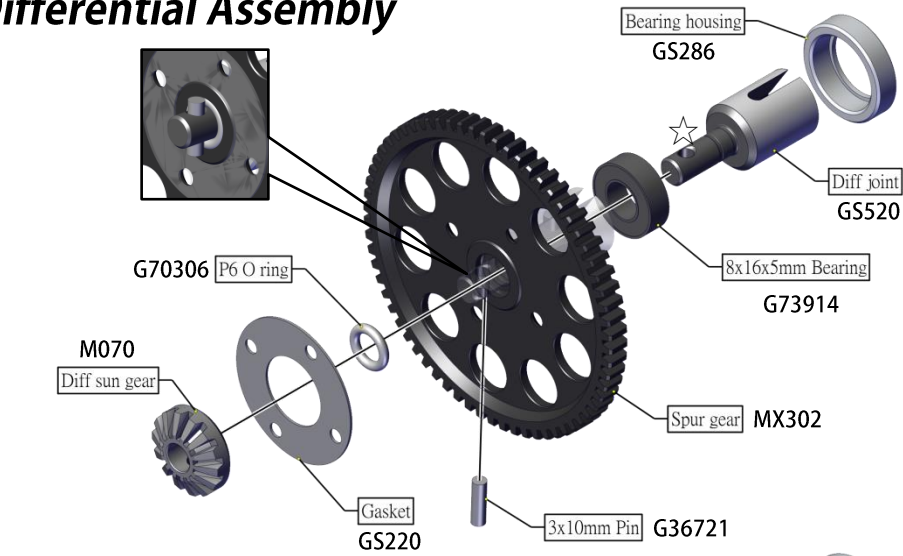
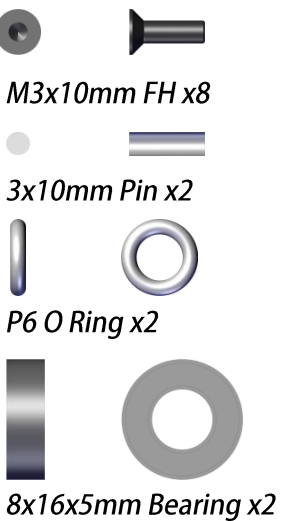
Front End Assembly



Rear End Assembly

1:1

Center Differential Assembly















☆ : **Use Grease**


★ : **Use Thread Lock**




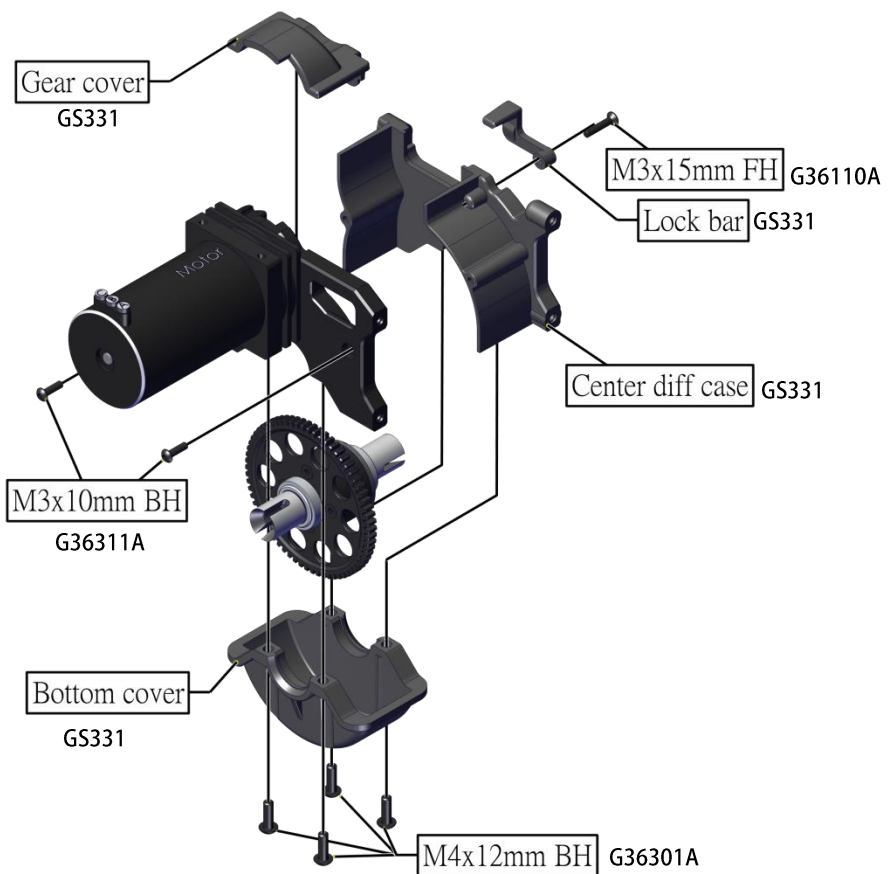
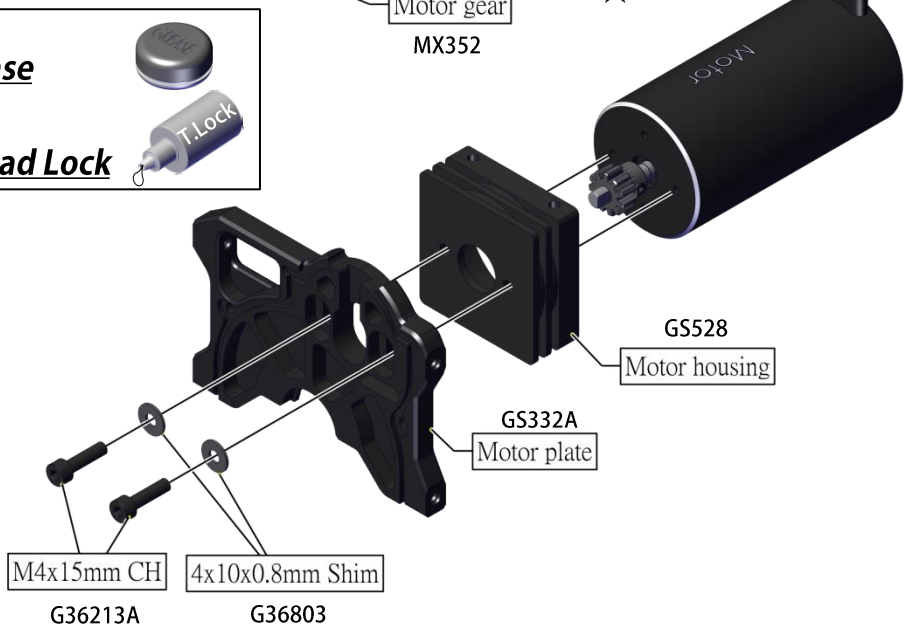
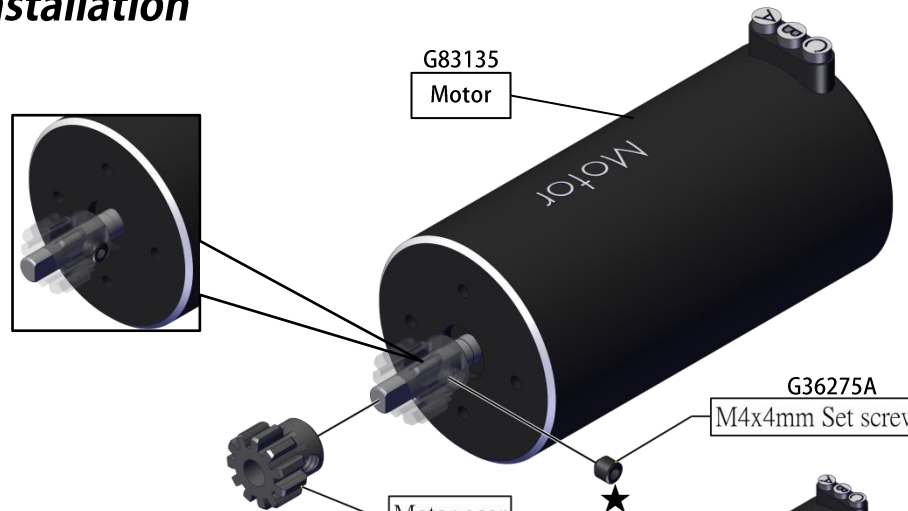
1:1

Motor Installation

-   M4x4mm Set screw x1
-   4x10x0.8mm Shim x2
-   M4x15mm CH x2
-   M3x10mm BH x2
-   M3x15mm FH x1
-   M4x12mm BH x4

☆ : **Use Grease** 

★ : **Use Thread Lock** 

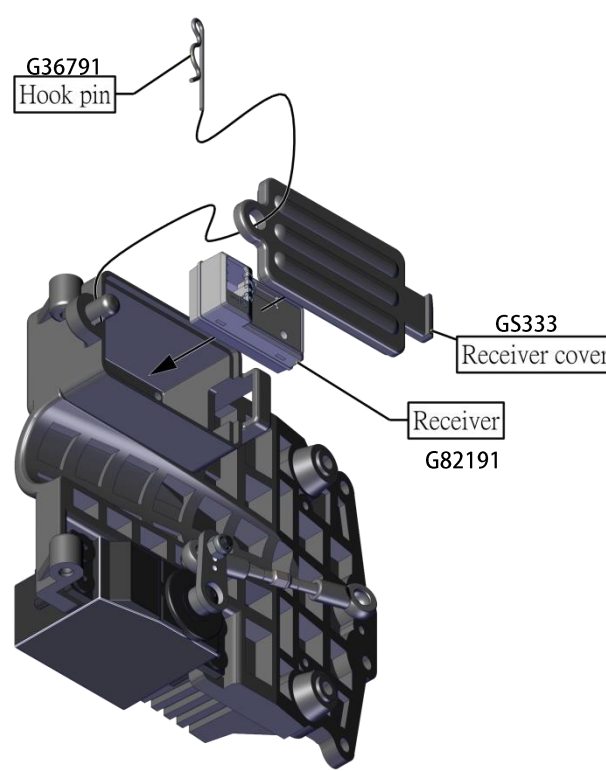
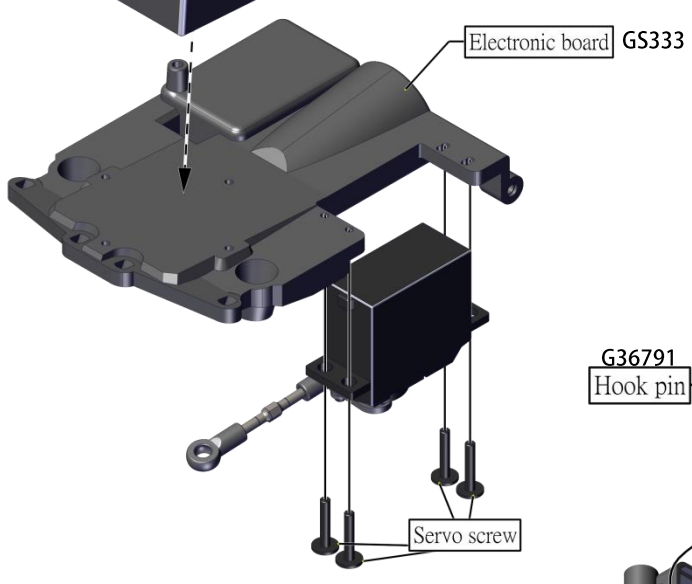
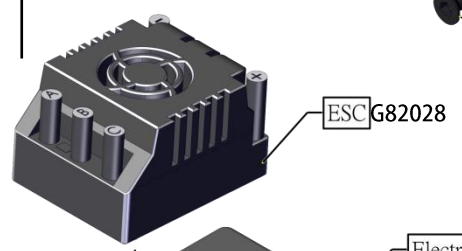
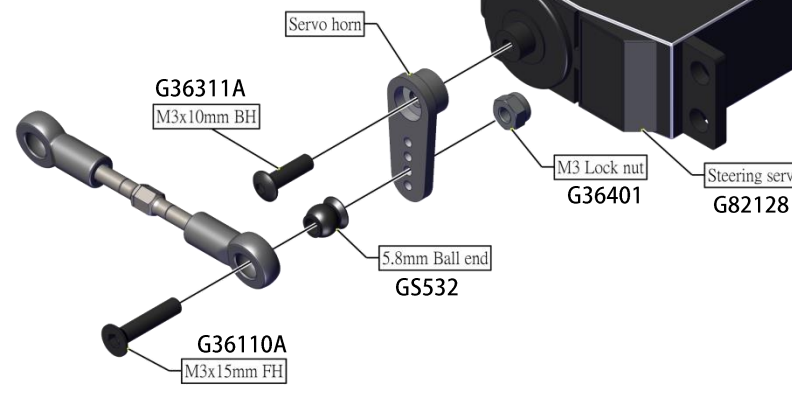
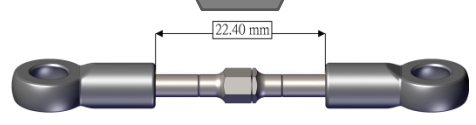
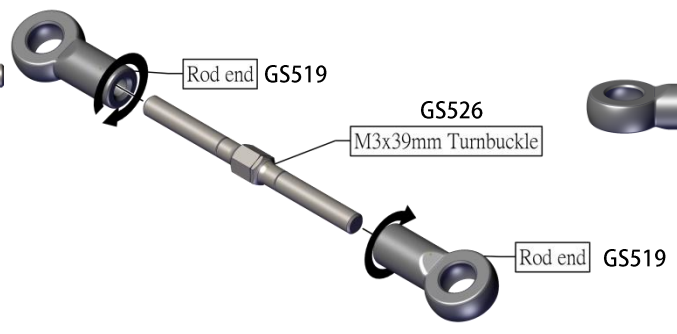


1:1

Radio Tray

1:1

- M3x39mm Turnbuckle
- M3x10mm BH x1
- M3x15mm FH x1
- M3 Locknut x1
- 5.8mm Ball end x1
- Servo screw x4

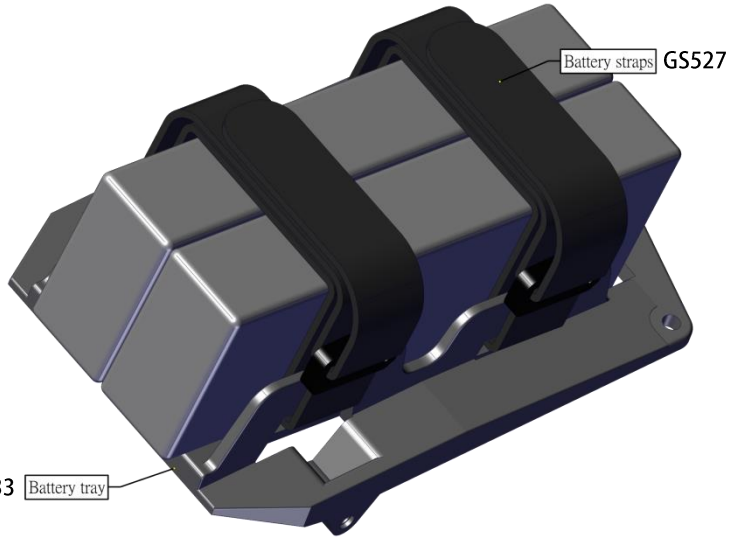


Battery Tray

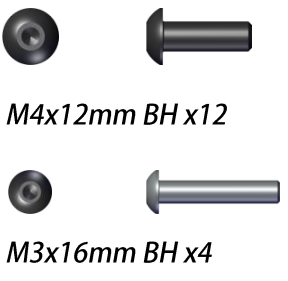


Magic straps x2

1:1

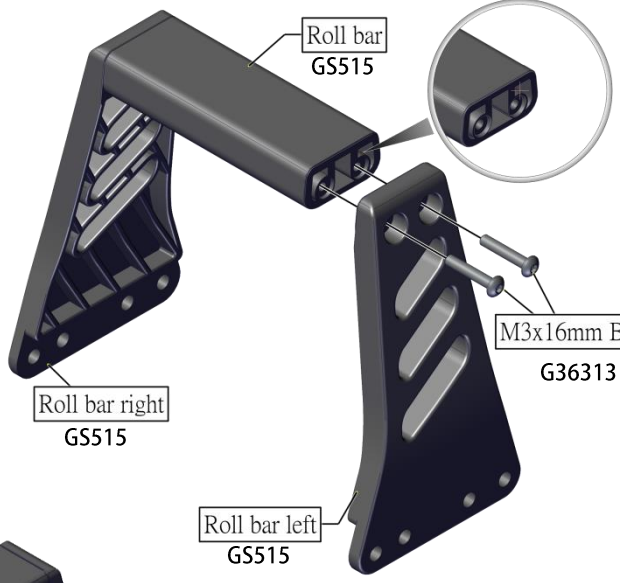


GS333 Battery tray



M4x12mm BH x12

M3x16mm BH x4



Roll bar GS515

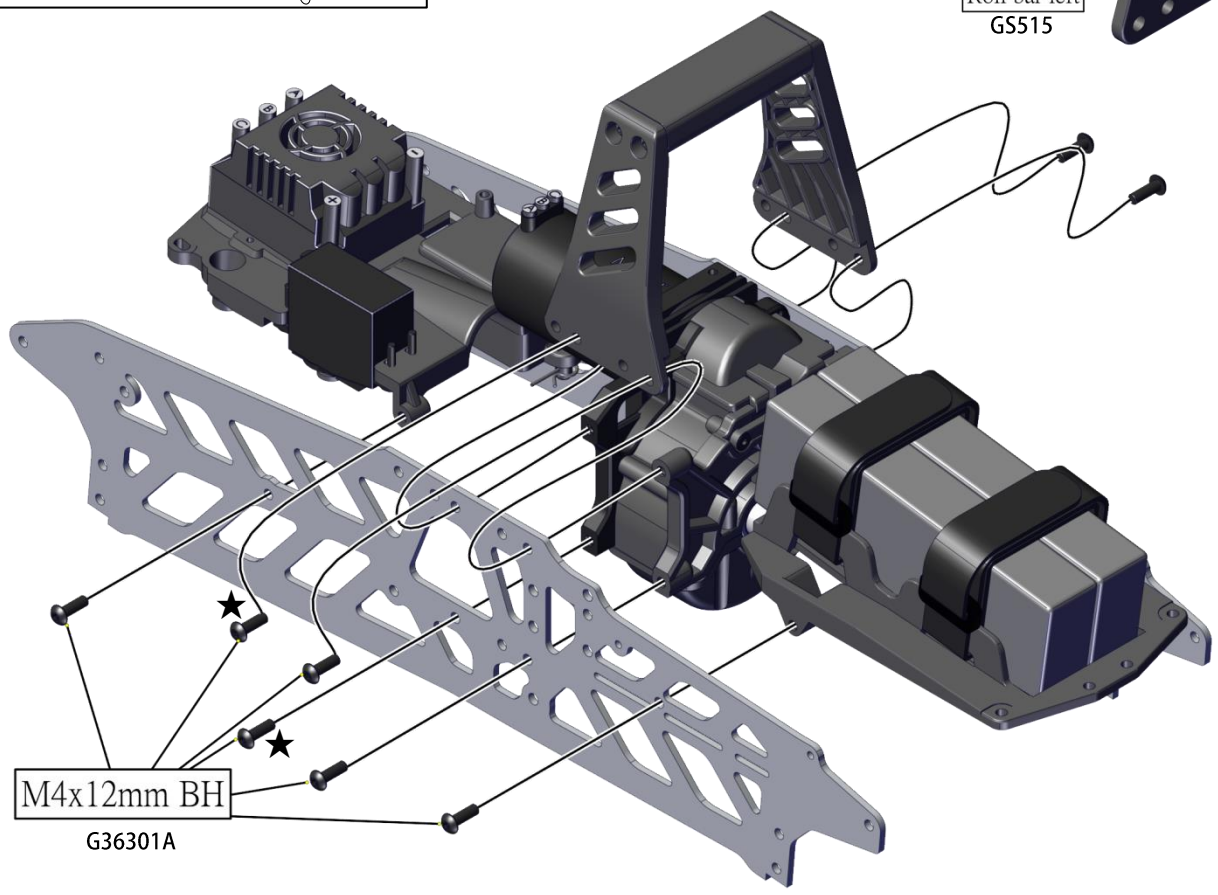
Roll bar right GS515

Roll bar left GS515

M3x16mm BH G36313

☆ : **Use Grease**

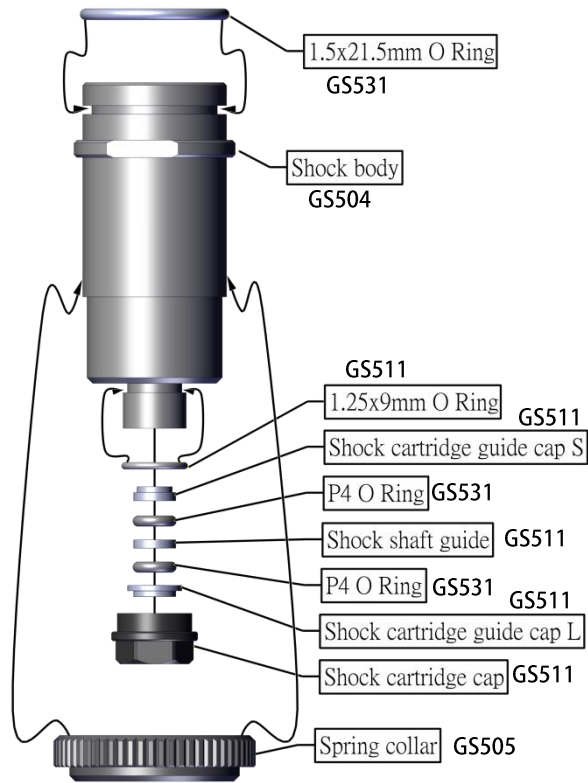
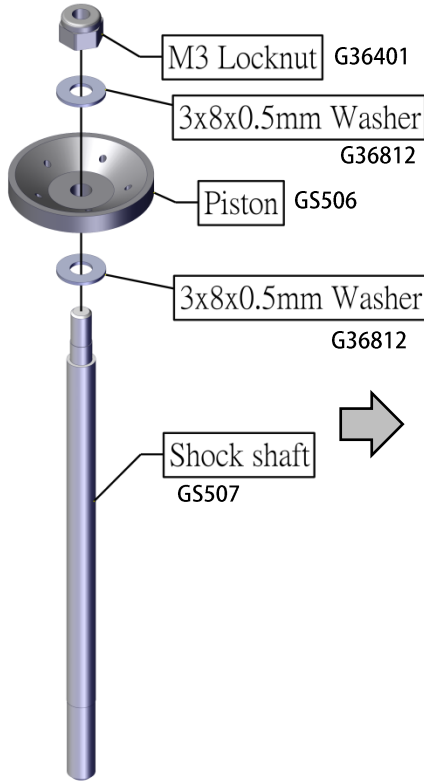
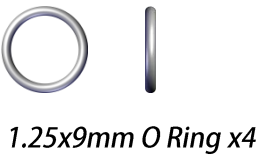
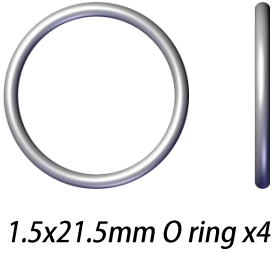
★ : **Use Thread Lock**



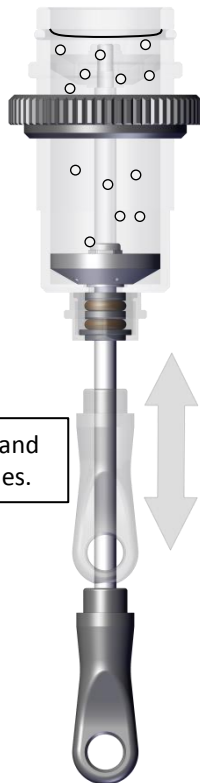
M4x12mm BH G36301A

1:1

Front/Rear Shock Assembly



Gently move the piston up and down to get rid of air bubbles.

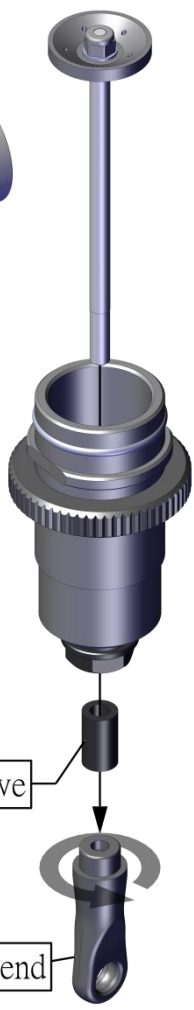


Fill oil below the top of the shock body.



GS508 Buffer sleeve

GS508 Shock shaft rod end

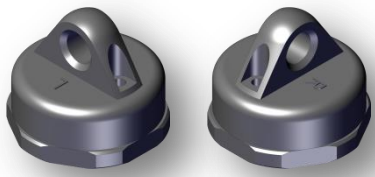


1:1

Front/Rear Shock Assembly(Cont.)

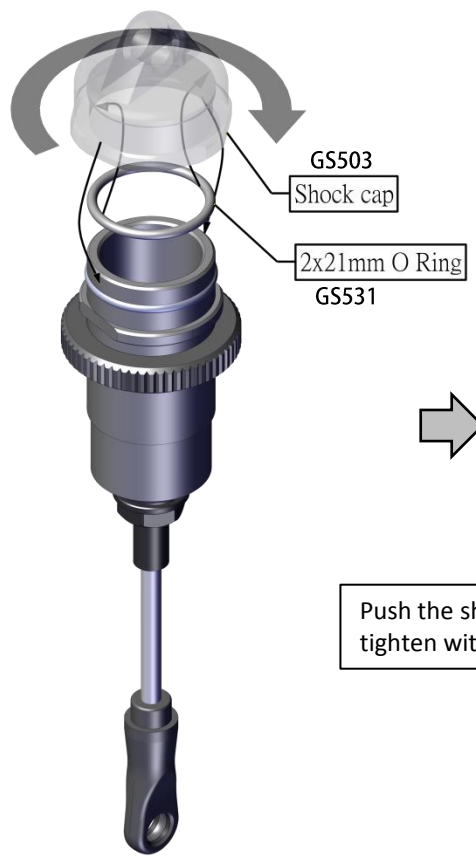


2x21mm O Ring x4

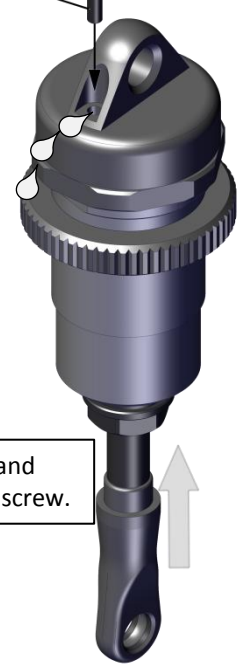


Left

Right



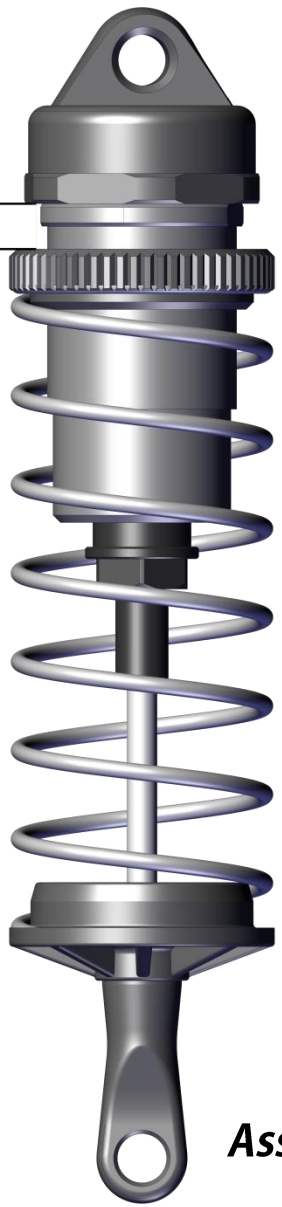
G36292A
M2.5x6mm BH



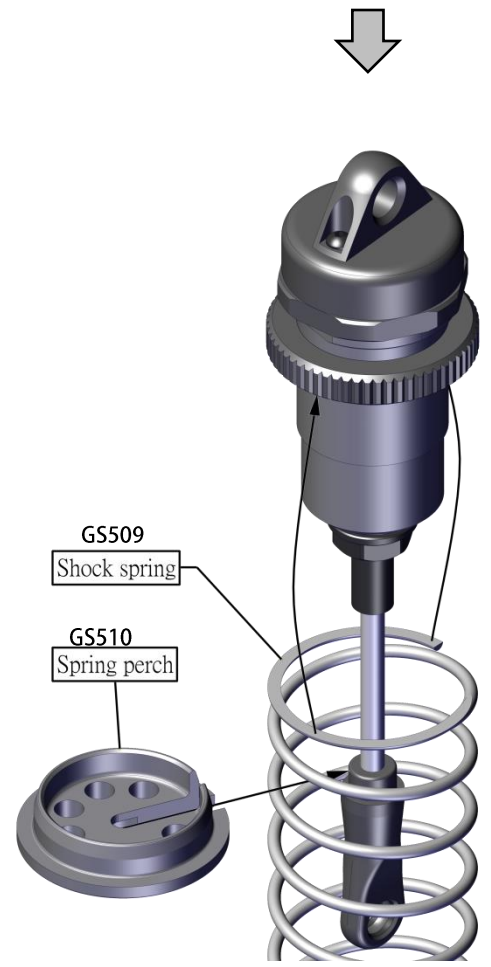
Push the shock shaft up and tighten with M2.5x6mm screw.

1:1

6.00 mm



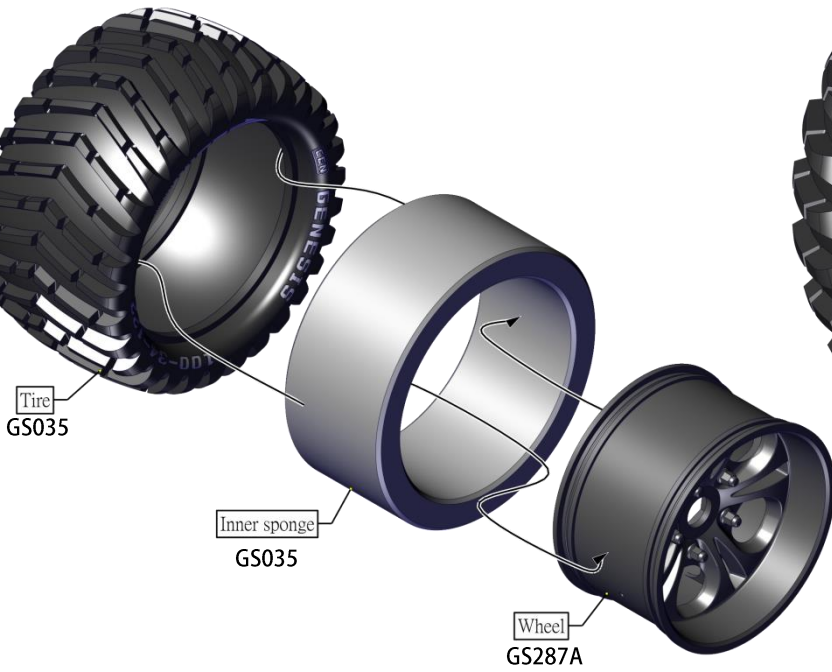
Assembly X4



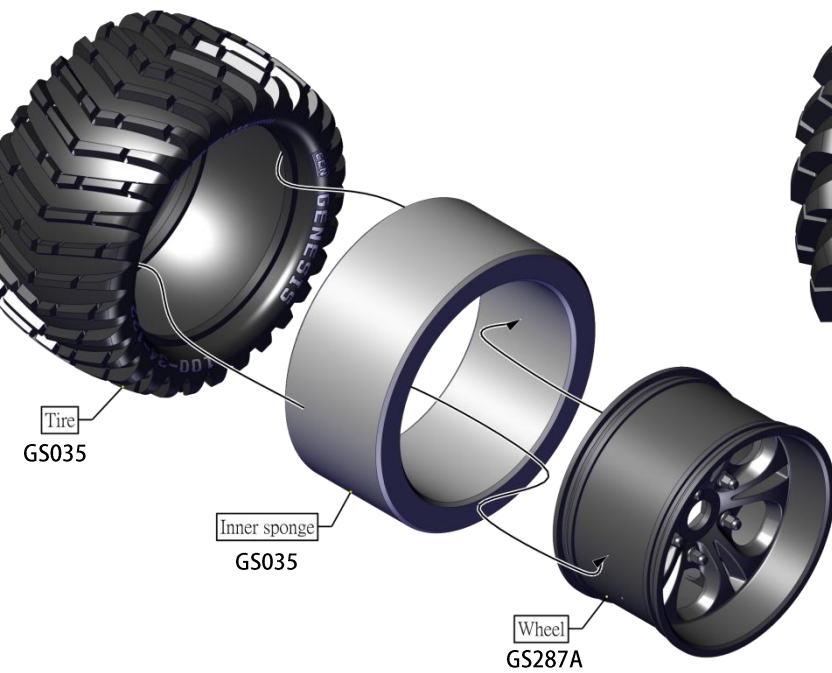
GS509
Shock spring

GS510
Spring perch

Wheel and Tire Assembly



Right Side Assemble 2 Sets

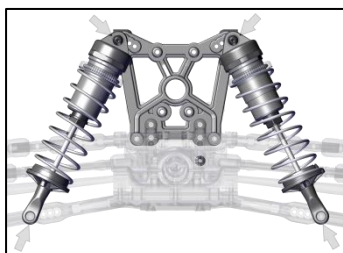
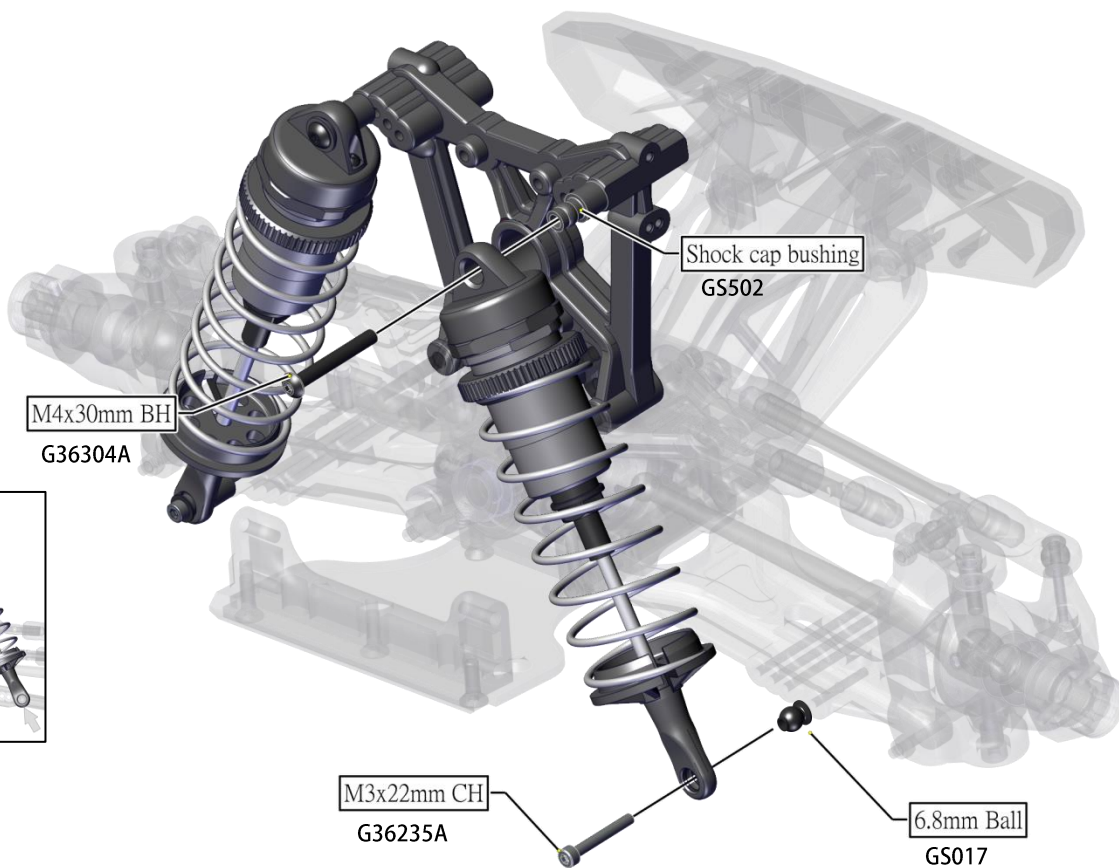
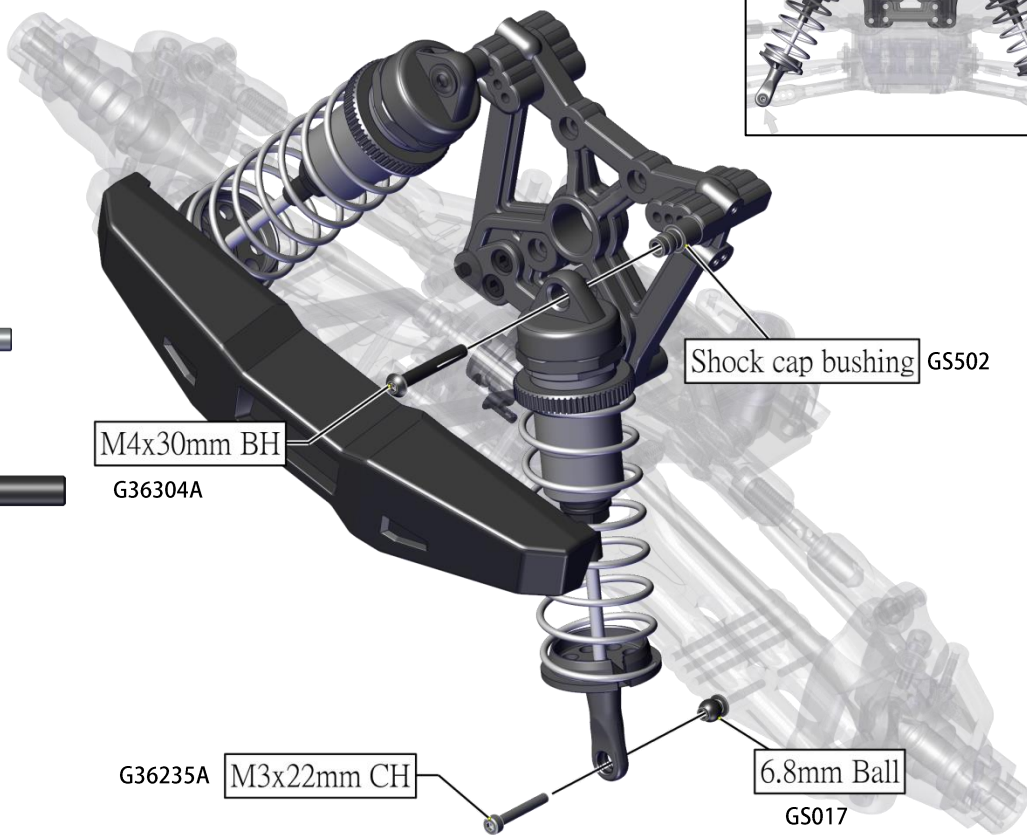
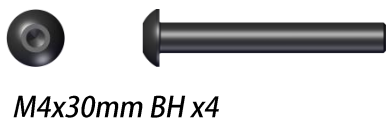
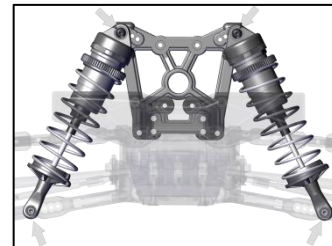


Left Side Assembly 2 Sets



1:1

Front and Rear Shock Installation



1:1

Final Assembly



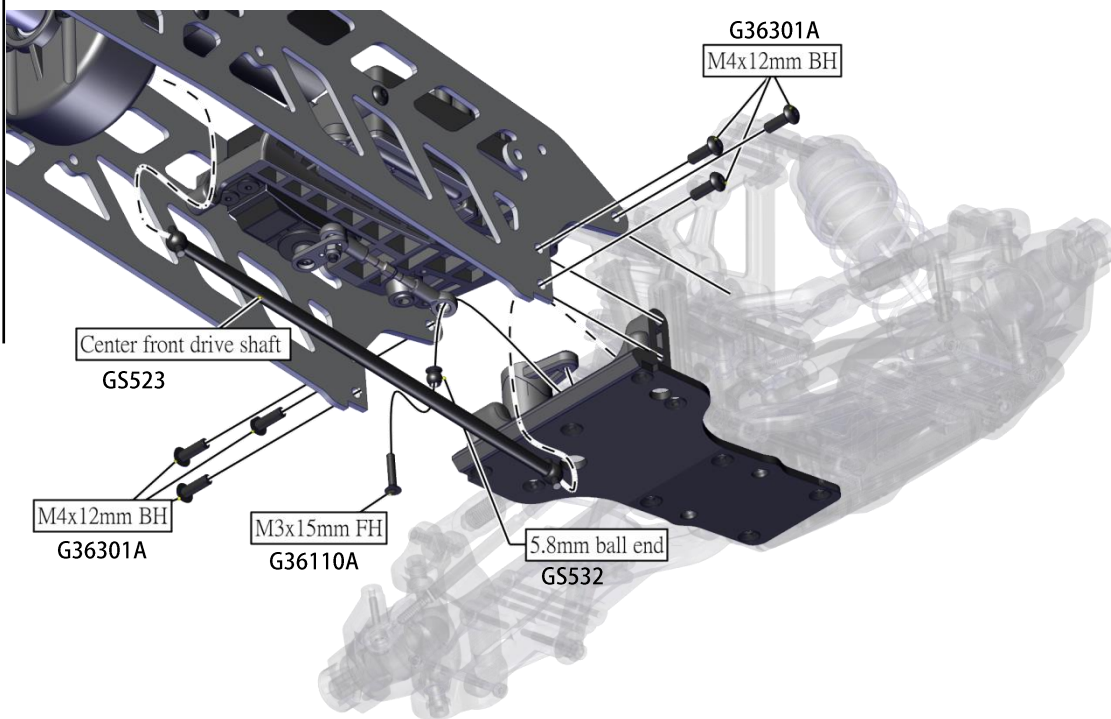
M4x12mm BH x12



M3x15mm FH x1



5.8mm Ball end x1



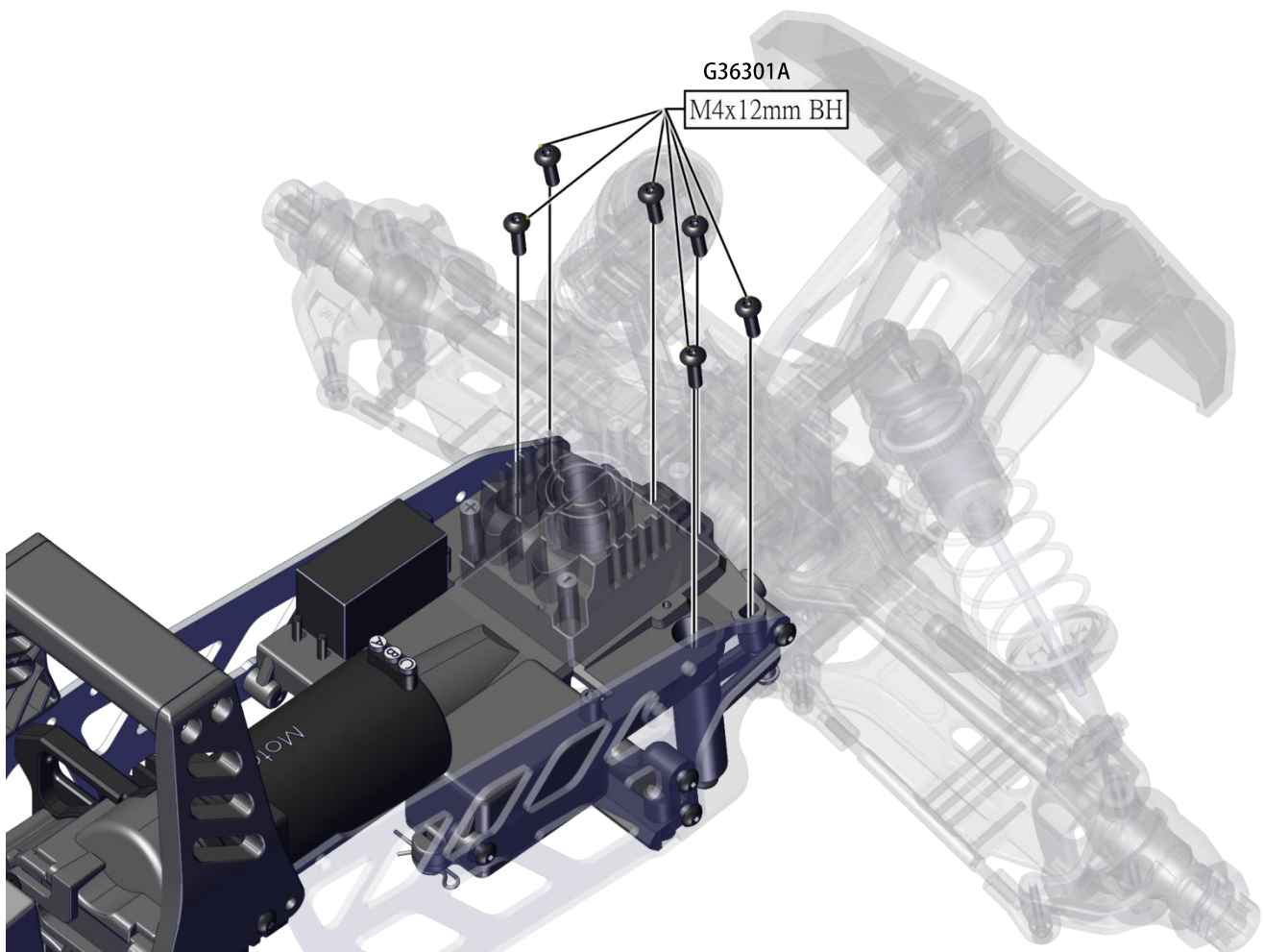
Center front drive shaft
GS523

G36301A
M4x12mm BH

M4x12mm BH
G36301A

M3x15mm FH
G36110A

5.8mm ball end
GS532



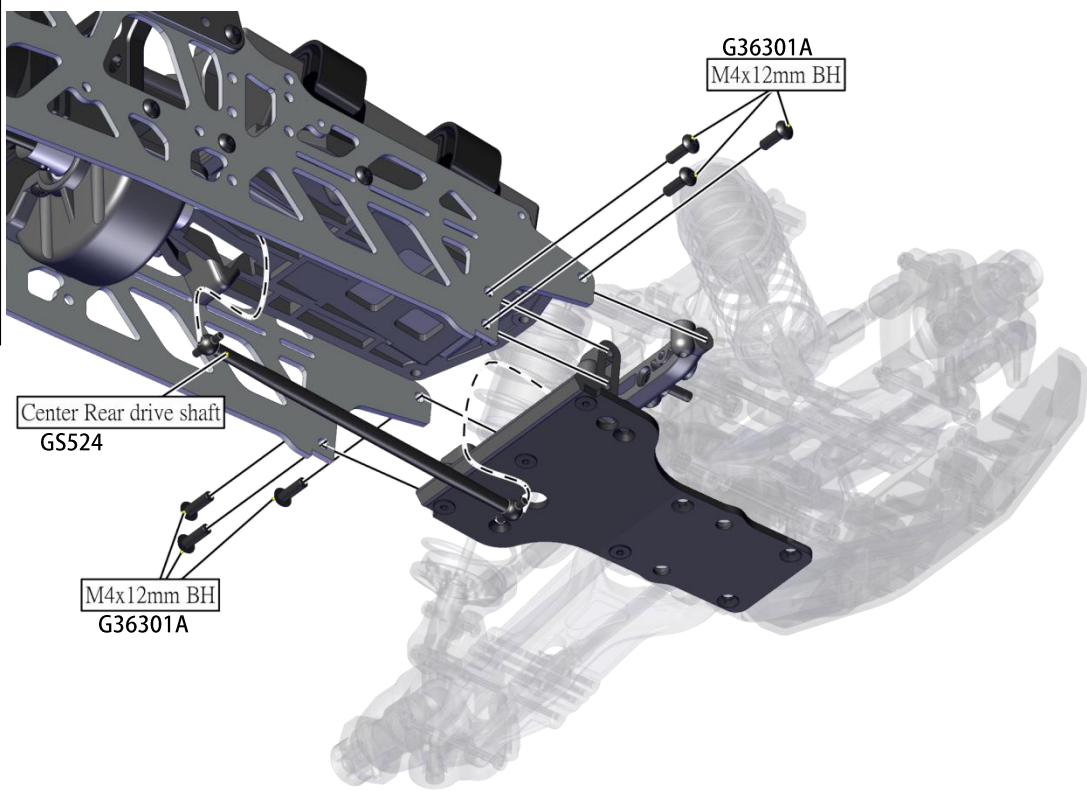
G36301A
M4x12mm BH

1:1

Final Assembly(Cont.)



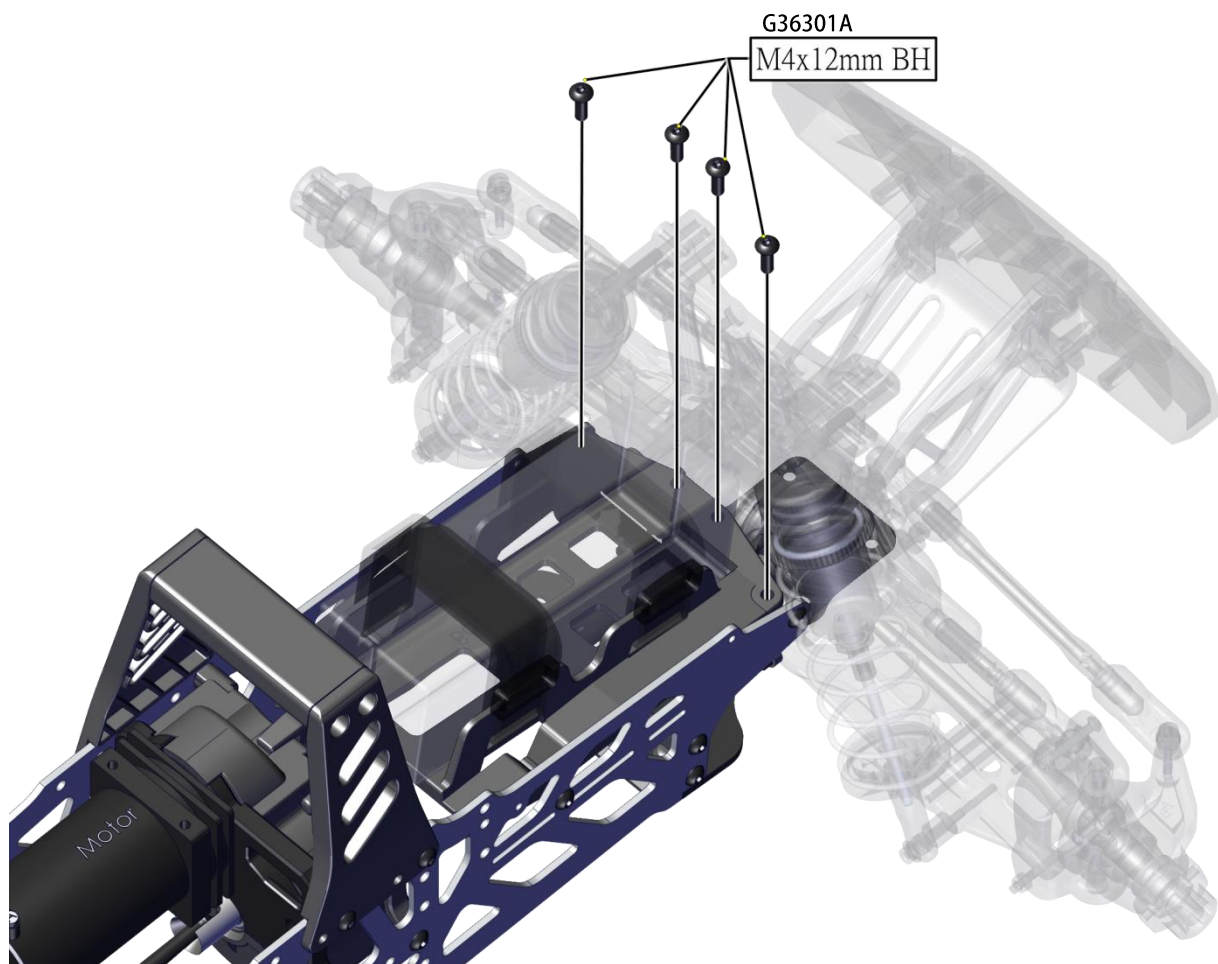
M4x12mm BH x10



G36301A
M4x12mm BH

Center Rear drive shaft
GS524

M4x12mm BH
G36301A



G36301A
M4x12mm BH

Motor

1:1

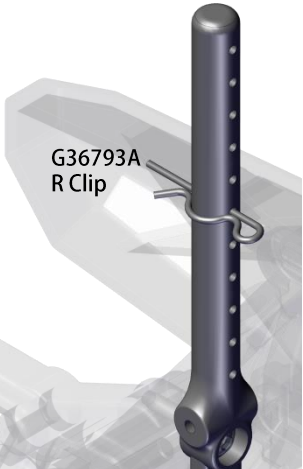
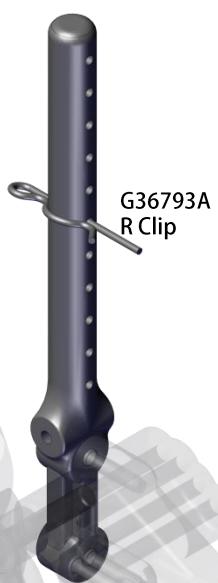
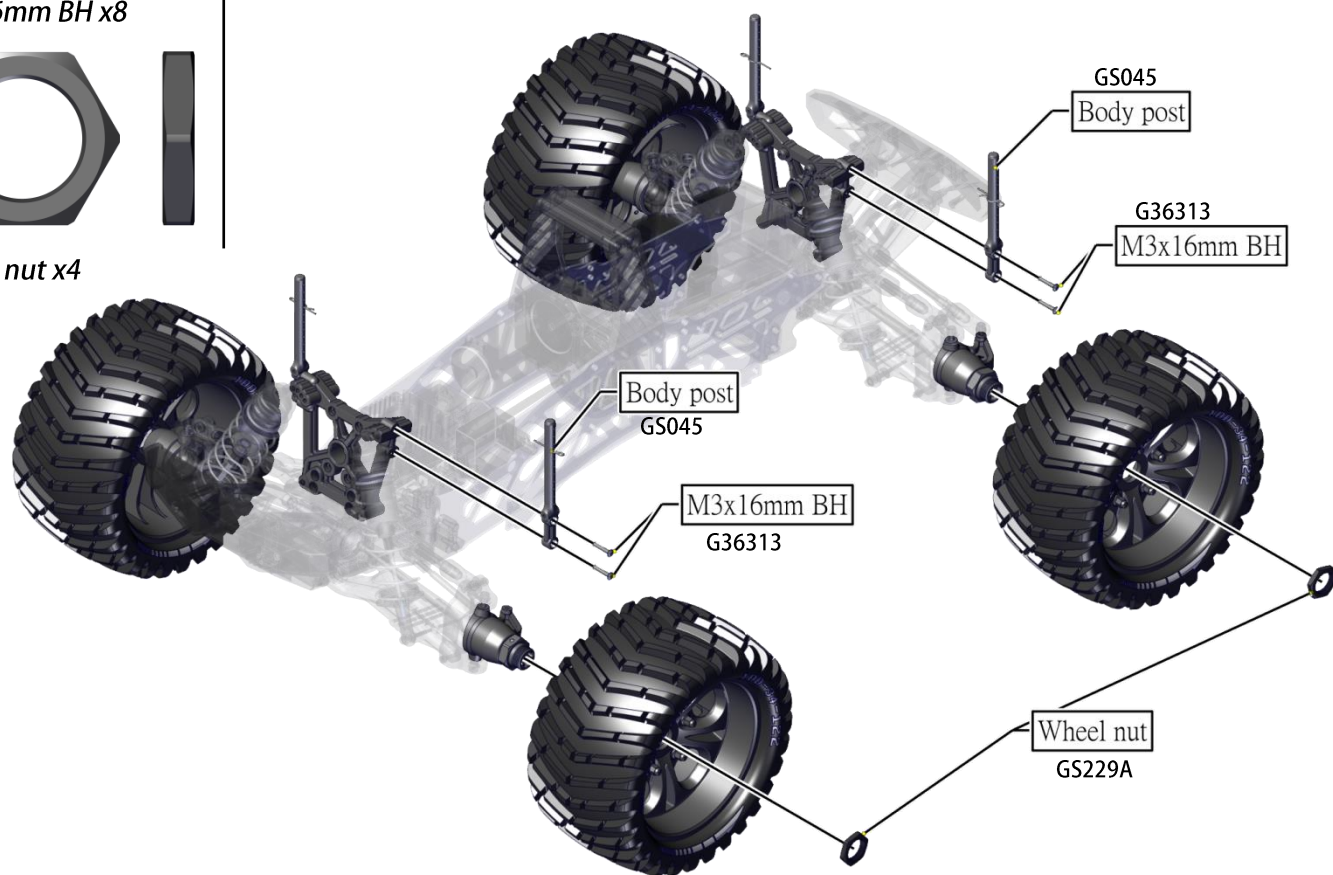
Body Post and Tire Installation



M3x16mm BH x8



Wheel nut x4



Front Body Clip Position

Rear Body Clip Position

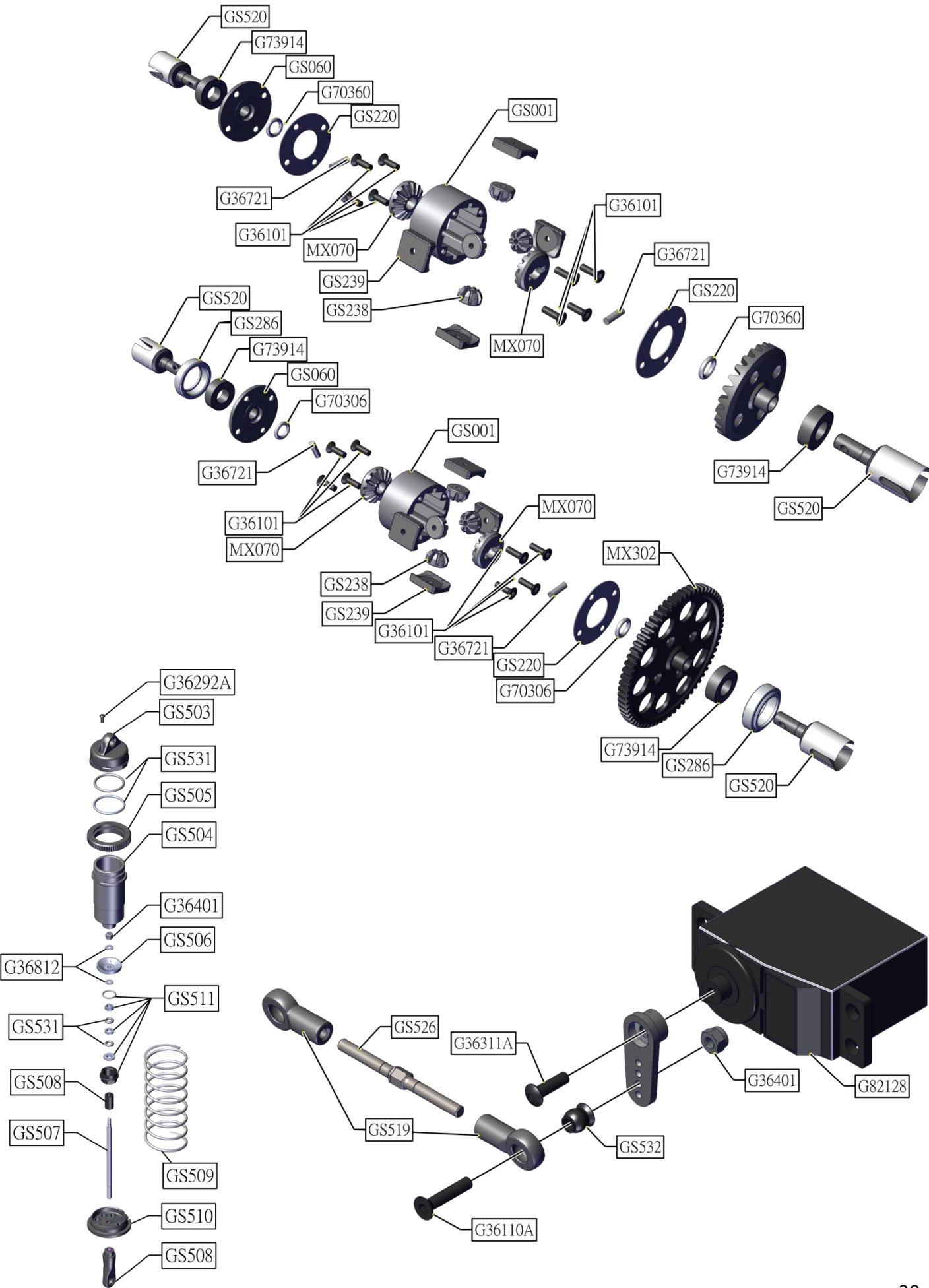
Spure Parts List

Number	Description	Number	Description
G36101	Flat Head Screws M3x10mm (6pcs)	GS019	Steering Metal Parts Set
G36110A	Flat Head Screws M3x15mm (6pcs)	GS020	Flanged Bushing (4MX6)
G36112A	Flat Head Screws M4x12mm (6pcs)	GS023	Alum. Arm Brace, 3pcs
G36113A	Flat Head Screws M4x16mm (6pcs)	GS025	Threaded Hinge Pin (4MMX56)
G36126A	Flat Head Screws M3x22mm (6pcs)	GS026	Threaded Hinge Pin (4MX73)
G36213A	Cap Head Screws M4x15mm (6pcs)	GS027	Threaded Hinge Pin (3MX44)
G36235A	Cap Head Screws M3x22mm (6pcs)	GS028	Wheel Axles, 2pcs
G36251	SET Screws M3x4mm (6pcs)	GS035	V-Patten Tires
G36271	SET Screws M5x5mm (6pcs)	GS045	Body Post Set
G36275A	SET Screws M5x4mm (6pcs)	GS059A	Skid Plate(Matte Black)
G36292A	Button Head Screws M2.5x6mm (6pcs)	GS060	Differential Case Cover
G36301A	Button Head Screws M4x12mm (6pcs)	GS072	Turnbuckles M4X78 (2pcs)
G36304A	Button Head Screws M4x30mm (6pcs)	GS074	Ball End B7.80 (10pcs)
G36311A	Button Head Screws M3x10mm (6pcs)	GS083	Rear Toe-In Brace
G36313	Button Head Screws M3x16mm (6pcs)	GS091	Universal Swing Shaft (2pcs)
G36316A	Button Head Screws M3x20mm (6pcs)	GS093	Drive Cup
G36317A	Button Head Screws M3x22mm (6pcs)	GS151	Reeper Body (Clear)
G36401	M3 Locknuts (6pcs)	GS152	Reeper Body (R)
G36402A	M4 Locknuts (6pcs)	GS153	Reeper Body (B)
G36721	Pin 3*10 (2pcs)	GS181	Reeper Decal/Sticker Sheet
G36722	Pin 3*22 (2pcs)	GS171	Colossus XT Decal/Sticker Sheet
G36791	R #6 HOOK PIN (6pcs)	GS206	Bulkhead II (Diff. Side Plate)
G36793A	R #8 HOOK PIN (6pcs)	GS217	Wheel Hex Drive Adapter 23mm (2pcs)
G36803	Washer M4x10x1 (6pcs)	GS220	Differential Gasket Seals (10pcs)
G36812	Washer M3x8x0.5 (6pcs)	GS229	Wheel Hex Nuts 23mm(Matte Black) 2pcs
G36815A	Shim M8x10x0.3 (6pcs)	GS238	Diff. Planot Gear (4pcs)
G36852	"E" #2 Clip (6pcs)	GS239	Diff. Gear Supports (4pcs)
G36904	Shim M12.2x15.9x0.5 (6pcs)	GS244	Swing Dogbone
G70306	O-Ring P.6 (10pcs)	GS245	Wheel Axle
G73914	Ball Bearing 8*16*5 (2pcs)	GS246	Spindle
G73915	Ball Bearing 10*19*7 (2pcs)	GS247	Spindle Carrier
G73917	Ball Bearing 6*10*3 (2pcs)	GS248	Upper Suspension Arm
G82190	MOD-3S 2.4GHz Transmitter (TX)	GS251	Bulkhead Bracket
G82191	MOD-3S 2.4GHz Receiver (RX)	GS252	Lower Bracket
G82192	MOD-3S 2.4GHz Radio System (TX+RX)	GS255	Rear Toe-in Bar
G82128	12KG Servo (Savox)	GS256	Steering Ackermann Drag Link
G82028	ECS WP-8BL 150A RTR V2.	GS258	Steering Post
G83135	Blushless Motor 1450kv	GS259	Aluminum Servo Saver Tube
GS001	Differential Case, 2pcs	GS260	Servo Saver Spring
GS002	Differential Gear Set.	GS261	Servo Saver Adjusting Nut
GS004	Diff. Pinion Gear (9T) CNC Straight Cut	GS277	E" Pin 3MX18", 2pcs
GS005	Differential Ring Gear 26T	GS278	Cross Pin, 2pcs
GS009	E-Ring Pin (8pcs)	GS283	Hex Post H5.5MX33mm
GS010	Wheel Hub	GS286	Alum. Bearing Holder
GS012	Flanged Bushing (3MX6)	GS287A	7.5 Wheels 23mm Hex (Gunmetal Chrome)
GS014	Steering Plastic Parts SET	GS316	Diff Housing Gear Box II (Front or Rear)
GS016	Ball B7.8	GS331	Center Transmission Plastic Parts ep.
GS017	Ball B6.8Product	GS332A	CNC Motor Mount Plate (Matte Black, M4)

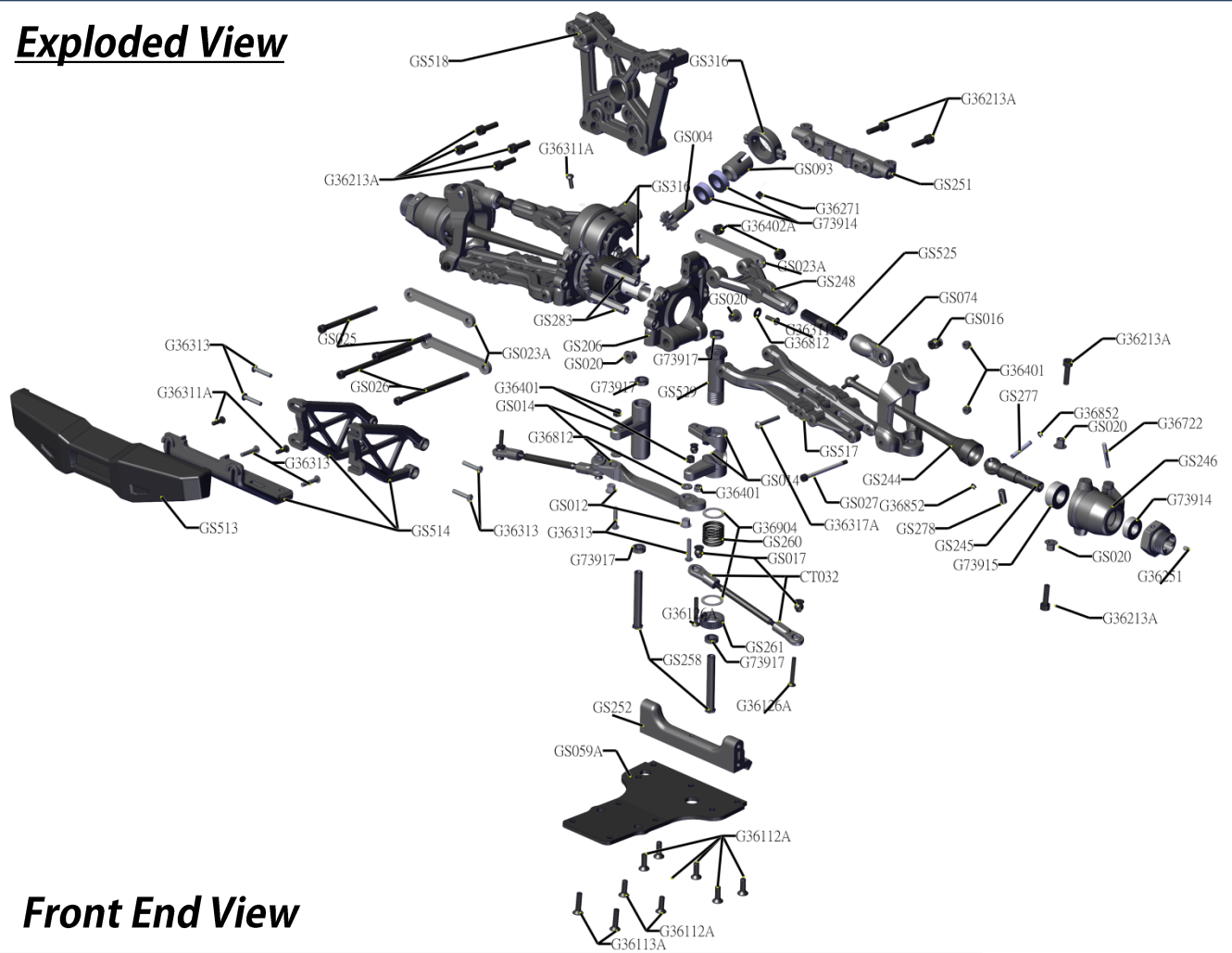
Spure Parts List

Number	Description
GS333	Radio and Battery Tray ep.
GS501	Complete Shock Set (Paire)
GS502	Shock Cap Bushings 2pcs
GS503	Shock Caps. 2pcs
GS504	Shock Body(Aluminum, hard anodized, 2pcs)
GS505	Shock adjustment Collars, 2pcs
GS506	Shock Piston 2pcs
GS507	Shock Shaft 4MM x 77MM, 2pcs
GS508	Shock Rod End 2pcs
GS509	Shock Spring Red T8.5X2.2MM, 2Pcs
GS510	Shock Spring Perch, 2pcs
GS511	Shock Shaft Guide Set (for 2 shocks)
GS512	Complete Bumper Set (F/R)
GS513	Bumper (F/R)
GS514	Bumper Brackets Set
GS515	Roll-Over Bar Handle Kit.
GS516	Suspension Arms Set (Upper or Lower).
GS517	Lower Suspension Arms
GS518	Shock Tower V2 M4
GS519	Rod End 5.8mm M3 Thread (4pcs)
GS520	Outdrives D6 (2pcs)
GS521	Frame (Chassis Plate, Matte Black, 1pcs.)
GS523	Front Drive Shaft 188
GS524	Rear Drive Shaft 141
GS525	Turnbuckle M8 X 41mm (2pcs)
GS526	Turnbuckle M3X39mm
GS527	Battery Straps (Black, Pair)
GS528	CNC Motor Mount (Matte Black, Cooling) M4
GS529	Complete Screw Set
GS531	Shock O-Ring Repaire Kit
GS532	Ball 5.8C3.5M3 (4pcs)
GS533	Shock Damper Tube 4X7X12 (4pcs)
CT032	Rod End B6.8 (4pcs)
MXS39	Alum. Diff. Case M3
MX070	Diff Gear Set-d6(2pcs)
MX302	Spur Gear T66
MX352	5MM Bore Motor Pinion Gear (12T, MOD1)

Exploded View

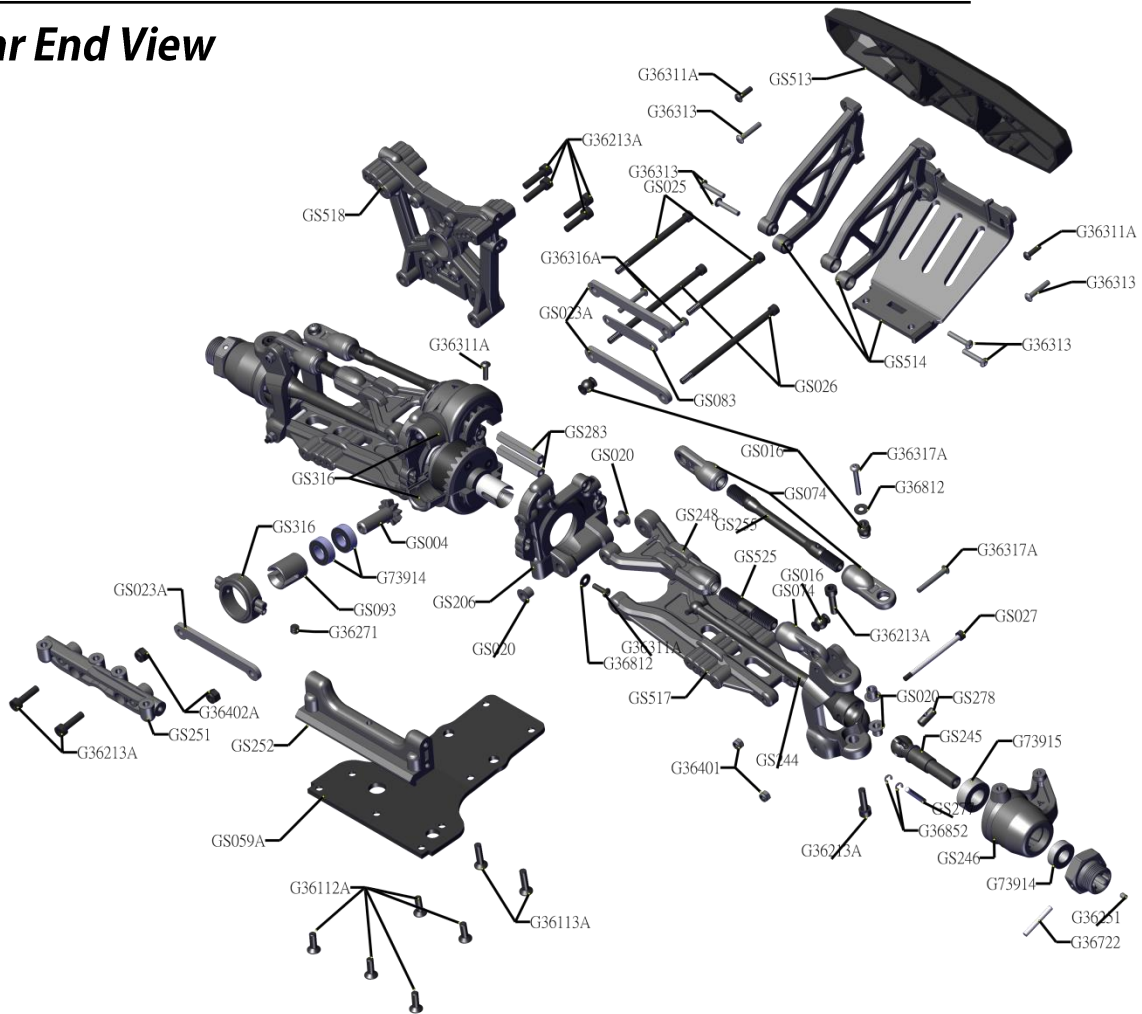


Exploded View

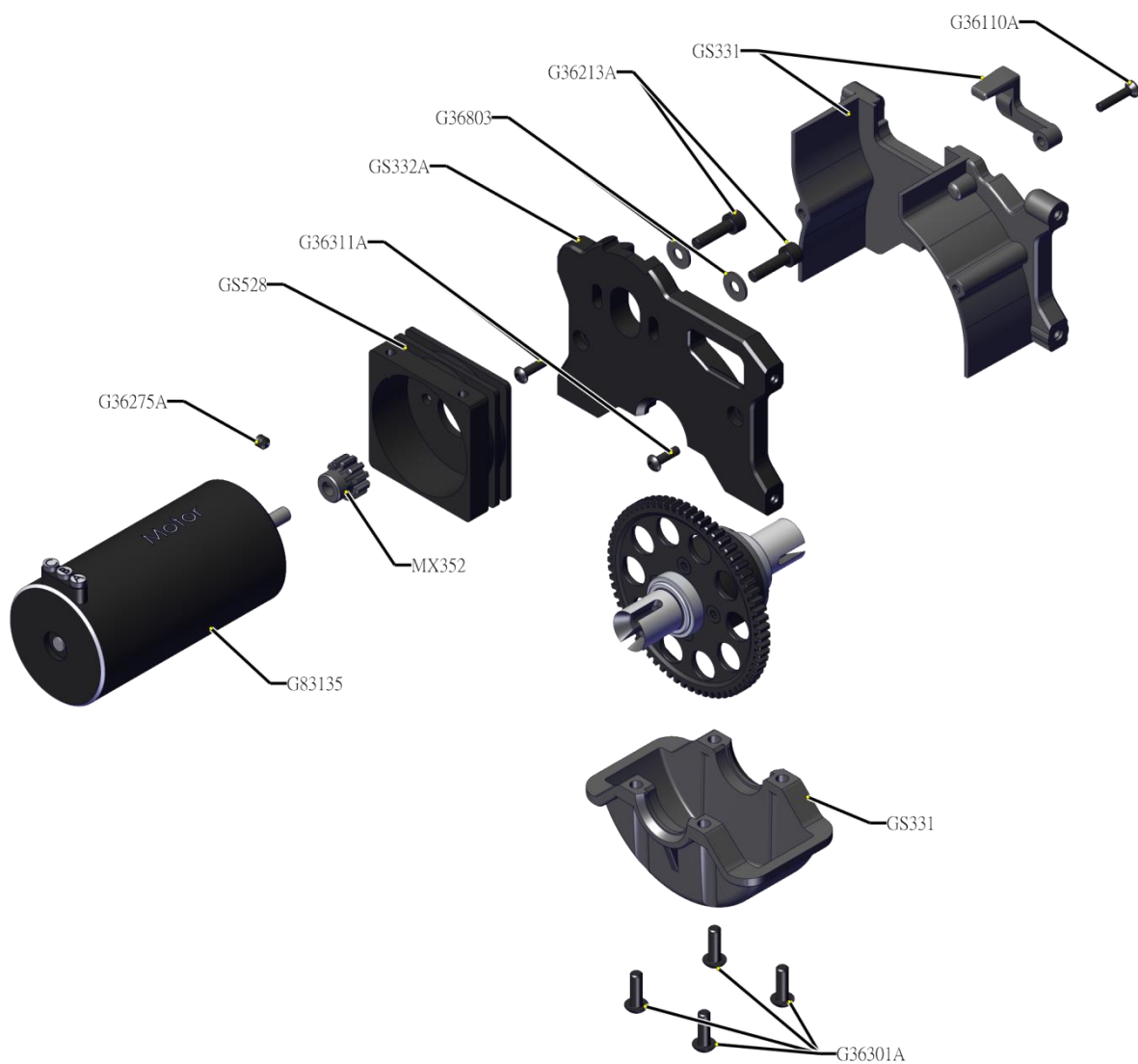
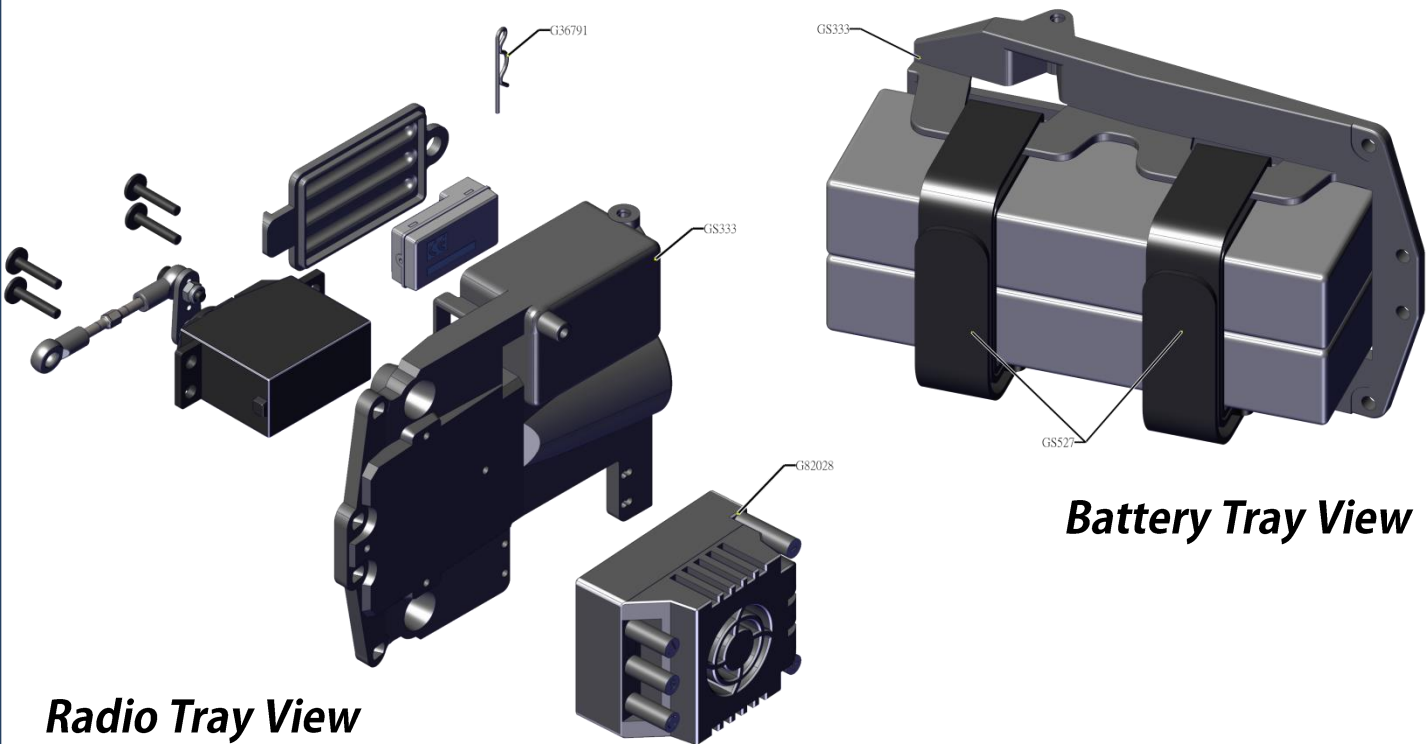


Front End View

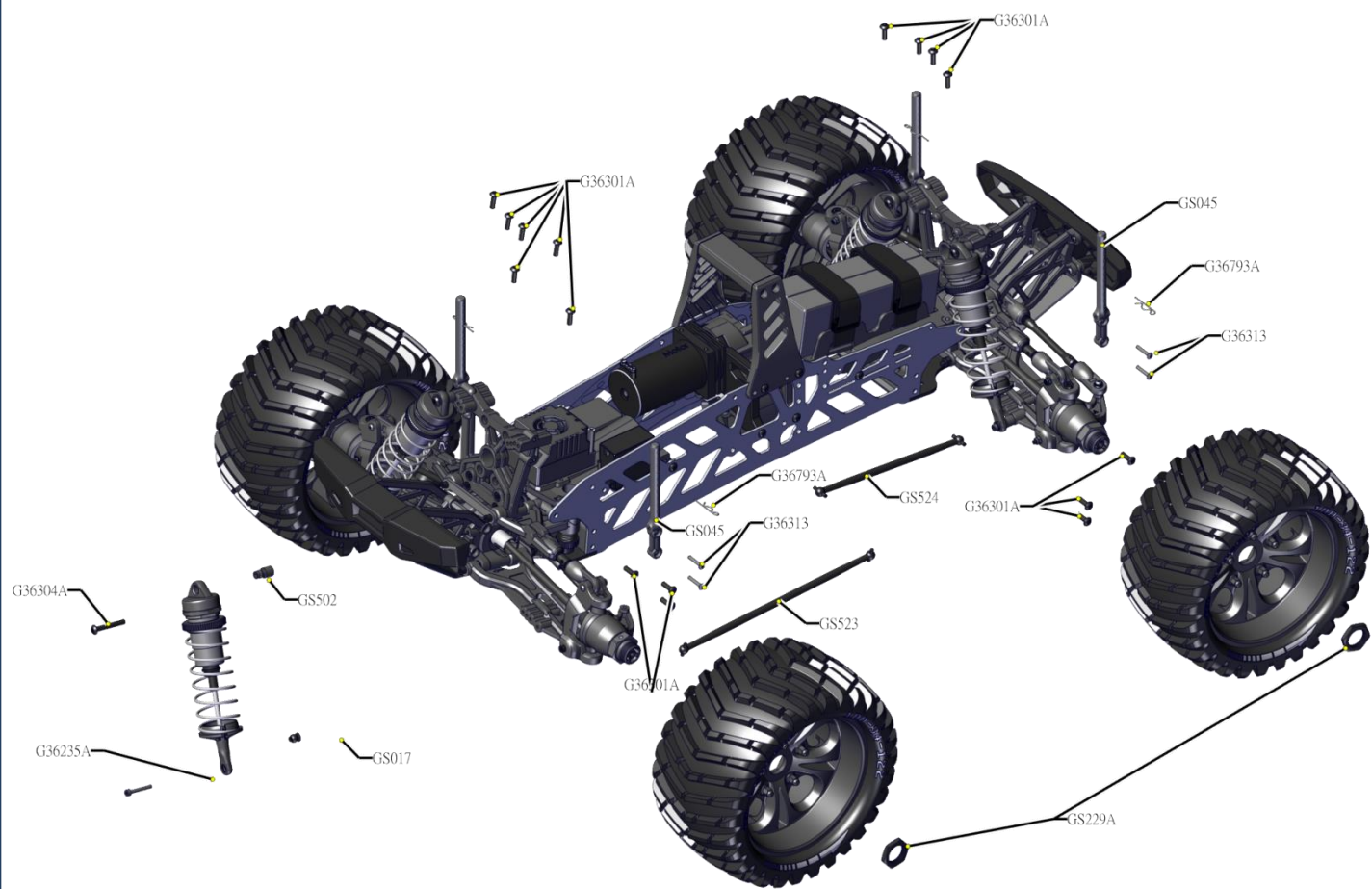
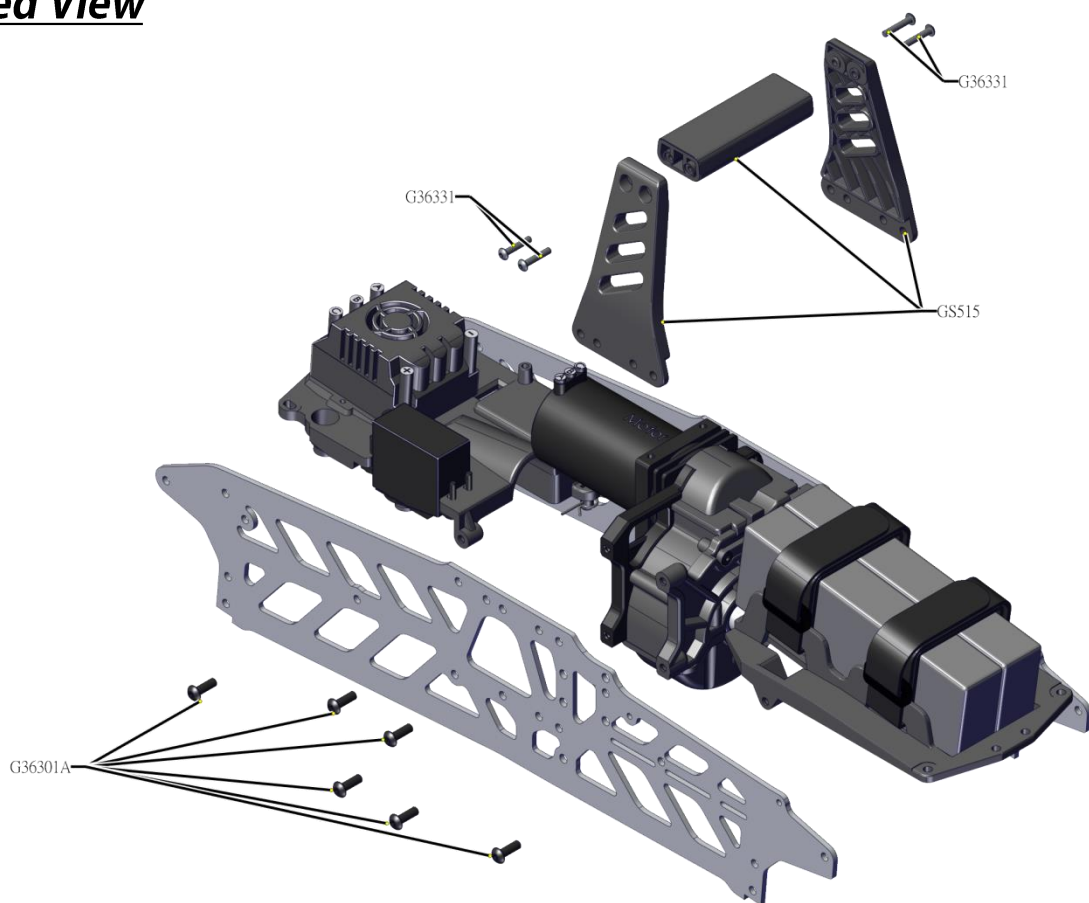
Rear End View



Exploded View



Exploded View



Memo



CEN
RACING

Manufactured by
CEN Racing Co.
7F, NO.12, Lane 122, Sec.2, Ganyuan St.
Shulin Dist., New Taipei City 23853, Taiwan

CENRACING.COM

